

Enabling Staged Pressurized Oxy-Combustion (SPOC): Improving Flexibility and Performance at Reduced Cost

DE-FE0029087

Scott Hume
Principal Technical Leader, EPRI

**2018 NETL CO₂ Capture Technology Project
Review Meeting**
August 14, 2018



Acknowledgement and Disclaimer

Acknowledgement

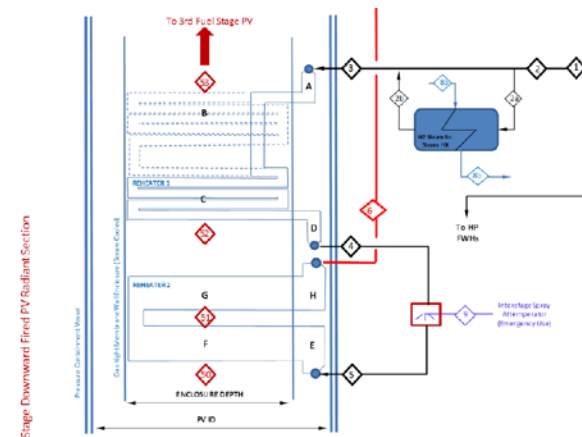
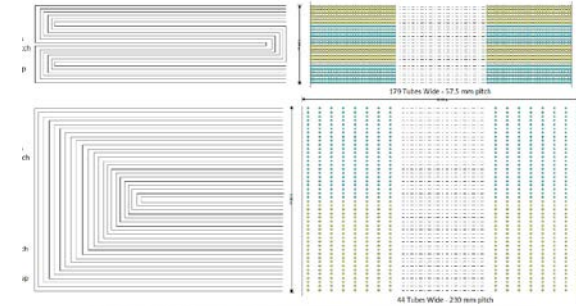
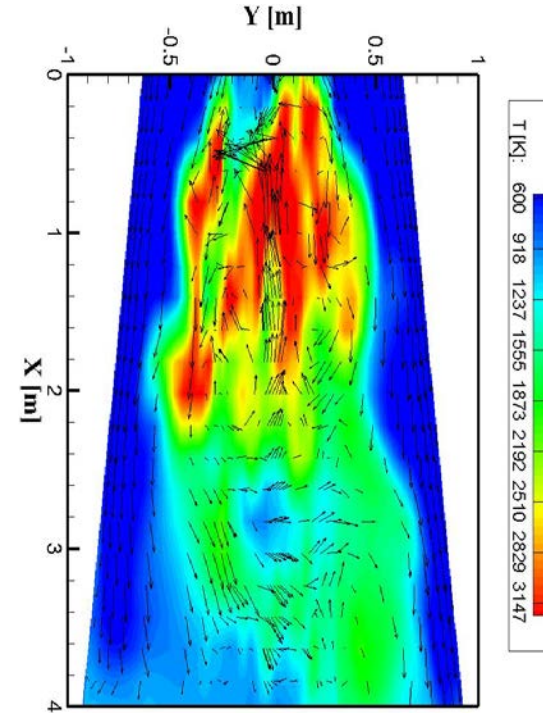
This material is based upon work supported by the Department of Energy National Energy Technology Laboratory under cooperative award number DE-FE0029087.

Disclaimer

“This presentation was prepared as an account of work sponsored by an agency of the United States Government. Neither the United States Government nor any agency thereof, nor any of their employees makes any warranty, express or implied, or assumes any legal liability or responsibility for the accuracy, completeness, or usefulness of any information, apparatus, product, or process disclosed, or represents that its use would not infringe privately owned rights. Reference herein to any specific commercial product, process, or service by trade name, trademark, manufacturer, or otherwise does not necessarily constitute or imply its endorsement, recommendation, or favoring by the United States Government or any agency thereof. The views and opinions of authors expressed herein do not necessarily state or reflect those of the United States Government or any agency thereof.”

Agenda

- Project Overview
- Technology Background
- Technical Approach
- Progress
- Plans for Future Development
- Questions



Project Overview

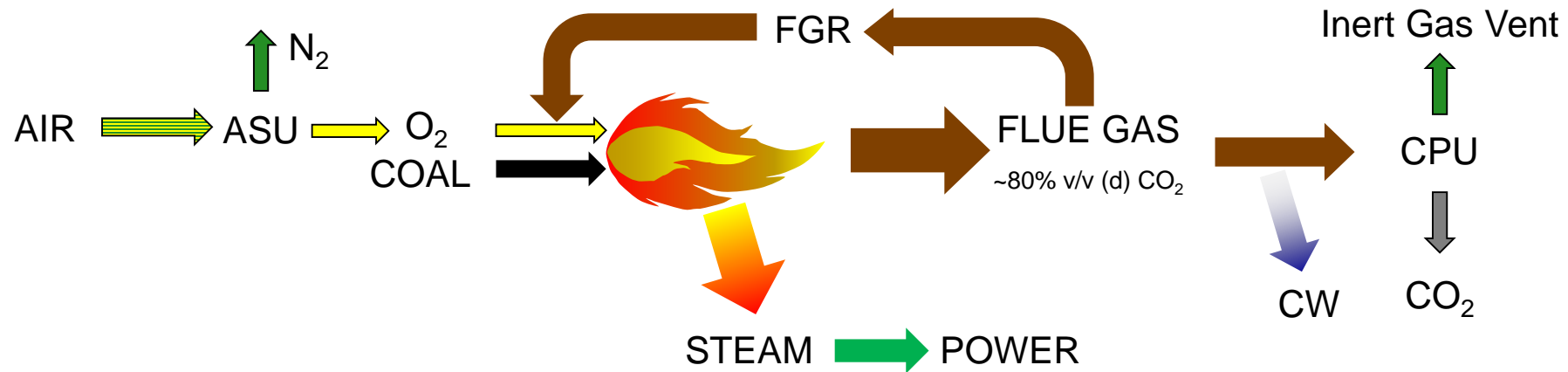


- Awarded October 2015, 24 month project
- \$1,167m federal funding, \$291,800 cost share (20%)
- EPRI are leading the project alongside Washington University in St. Louis, American Air Liquide and Doosan Babcock
- Objectives:
 - Update the design of the novel staged, pressurized oxy-combustion (SPOC) system by OEM review
 - Develop flexible design concepts utilizing the SPOC system and advanced oxygen supply strategies
 - Validate design tools through pilot plant testing

Technology Background – Oxy-Combustion



- Oxy-combustion technologies typically recycle a portion of the flue gas to reduce the peak temperatures and increase the resulting gas flow rate, making convective heat transfer easier
- The fan power needed for flue gas recycle (FGR) increases the overall auxiliary power
- Atmospheric oxy-combustion necessitates large furnace volumes and cannot utilize fuel moisture latent heat (low partial pressure of H₂O results in low-temperature condensation)

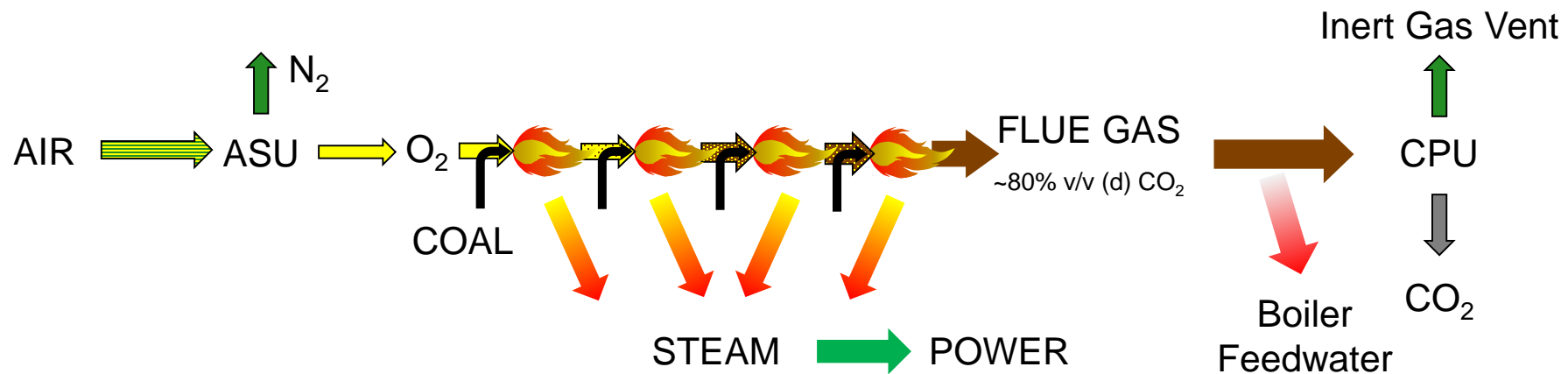


Boiler hardware arrangement similar to conventional air-fired boiler

Technology Background – Oxy-Combustion (cont.)



- **Staged Combustion** – most of the oxygen is added to 1st stage but fuel is restricted to deliver appropriate post-combustion temperatures; FGR and gas volume reduced
- **Pressurized Combustion** – reduces the size of the combustion system, eliminates air ingress, allows latent heat from moisture to be recovered at useful temperatures whilst delivering gases to the CPU at elevated pressure, enables easy SO_x/NO_x removal and restricts radiative heat flux by creating an optically dense medium; FGR is minimized

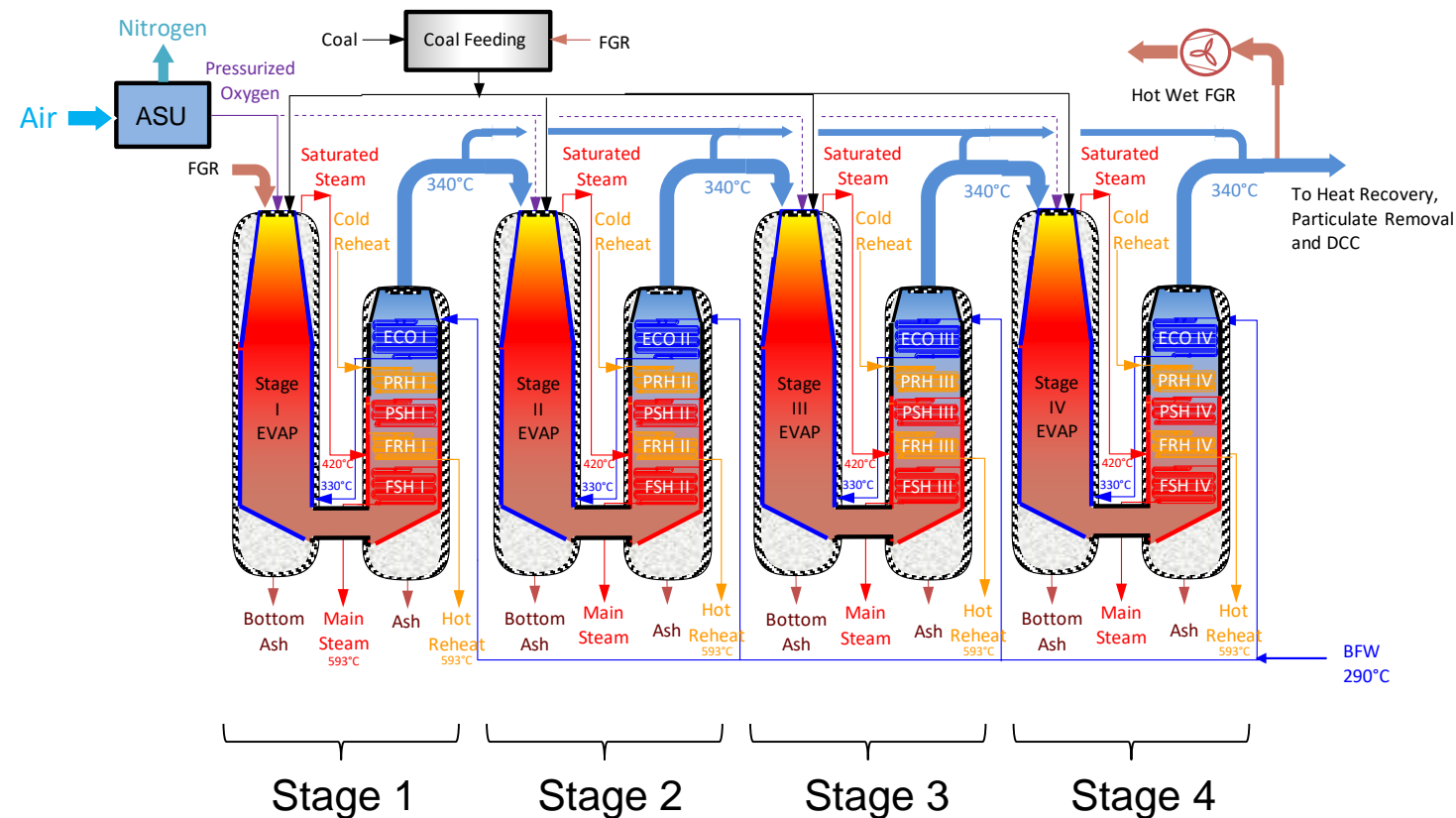


Compact boiler, enhanced convective heat transfer and lower CO₂ compression costs

Technology Background – SPOC



- What is “Staged Pressurized Oxy-Combustion” (SPOC)?
- Burn fuel incrementally to limit peak temperatures and heat flux levels
- Absorb heat sufficiently to allow next stage combustion
- Minimal need for FGR, hence low fan power requirements
- Operating pressure assures fuel moisture latent heat is captured into the steam cycle

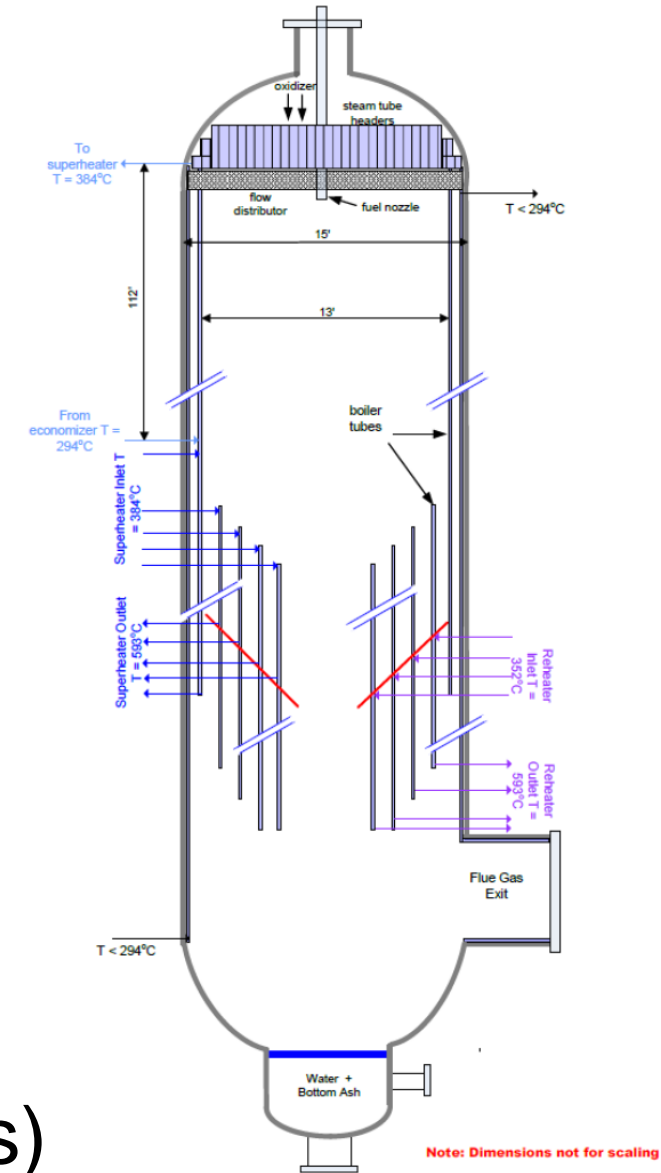


Technical Approach

Task	Description	Sub-tasks
Task 2	Concept review and configuration optimization	<ul style="list-style-type: none"> Design Basis Boiler OEM review of prior work Developed risk matrix Upgraded OEM boiler performance model for SPOC conditions Conducted heating surface sizing exercise for 550MWe scale Define boiler concept design, assess costs
Task 3	System integration with steam cycle	<ul style="list-style-type: none"> Model NETL baseline case B12A Assess heat recovery opportunities Auxiliary power of SPOC system
Task 4	Turndown and flexibility	<ul style="list-style-type: none"> Options for enhanced turndown Oxygen supply flexibility
Task 5	Combustor performance testing	<ul style="list-style-type: none"> Upgrade pilot plant for target pressure operation Carry out full load and part load testing to recommended conditions
Task 6	Economics	CAPEX assessment, OPEX and LCOE

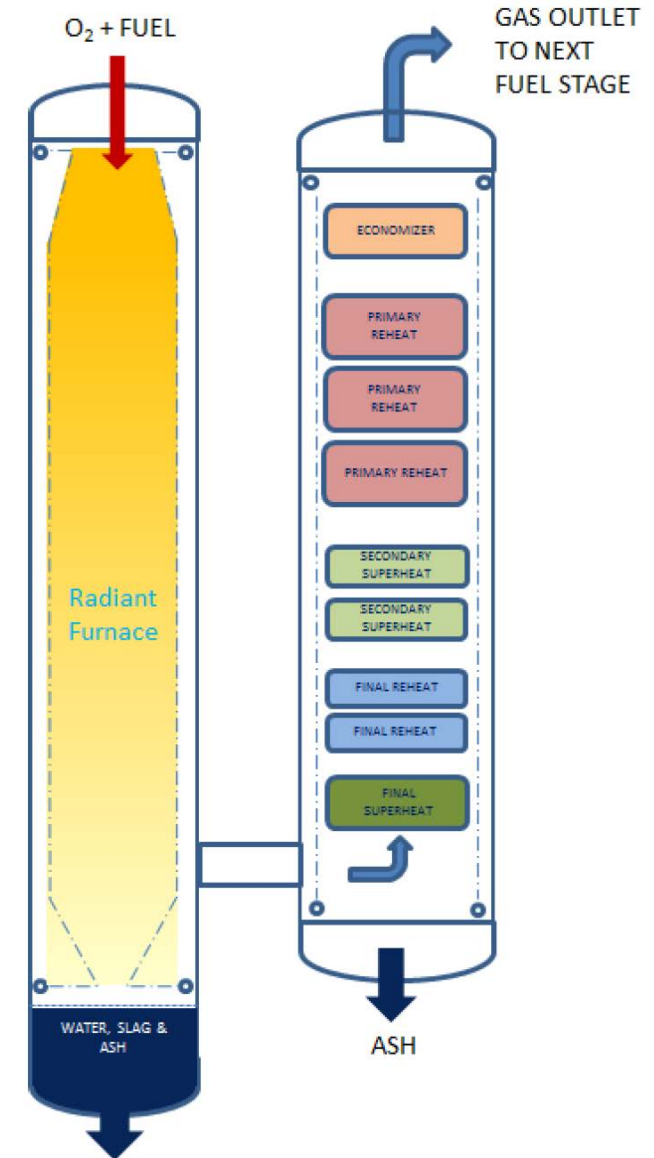
Task 2 – OEM Concept Review

- The previously developed SPOC boiler concept was reviewed against OEM boiler design requirements
- Areas of particular focus were:
 - Layout
 - Vessel Arrangement and Sizing
 - Burner Design
 - Fuel Selection and Fuel Handling
 - Particulate Removal
 - Ash Management and Ash Handling
- Risk matrix developed (with potential mitigations)

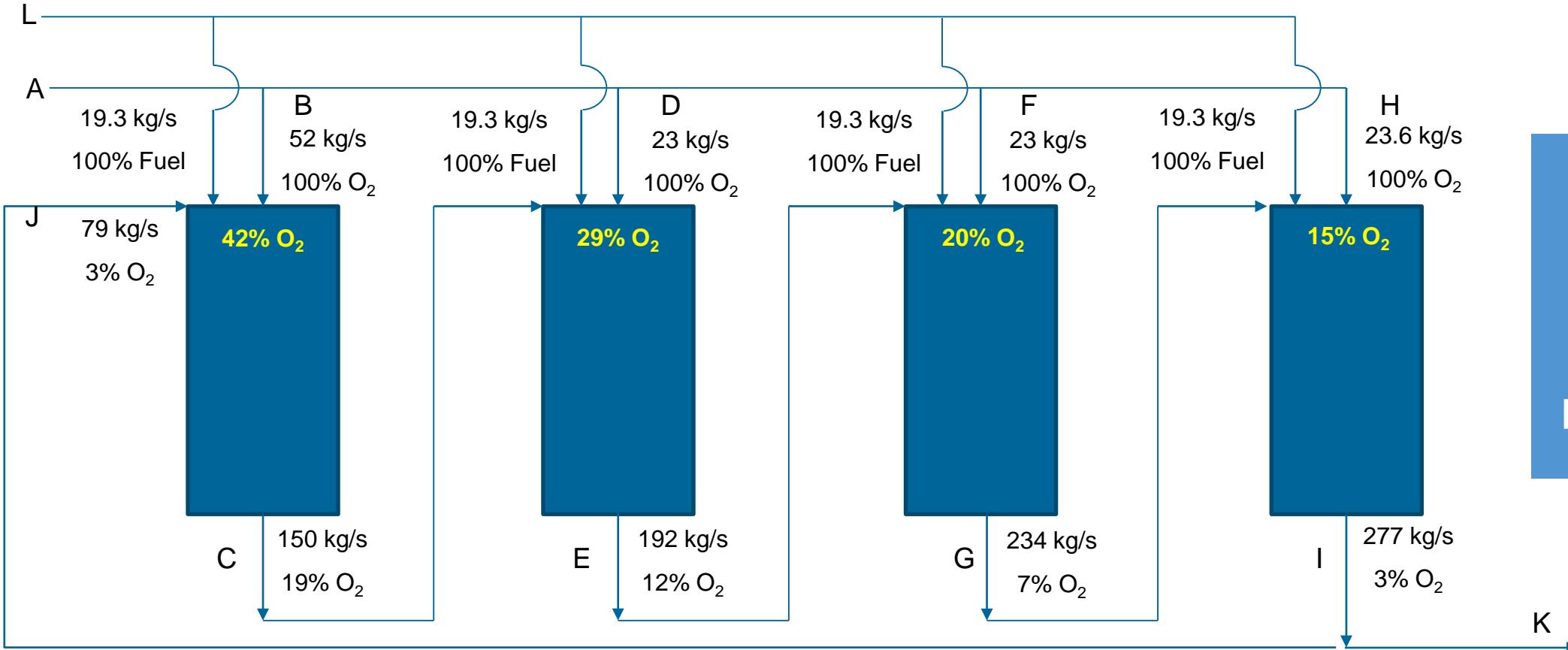


Task 2 – Risk Mitigation

- Revised design:
 - Combustor vessel with steam cooled walls and no heating surface in the gas path
 - Transition to upward flowing ‘convective’ sections – allowing for ash and slag management
 - Cross flow heat transfer, substantial heat transfer surface
- A workshop was held to develop the concept further



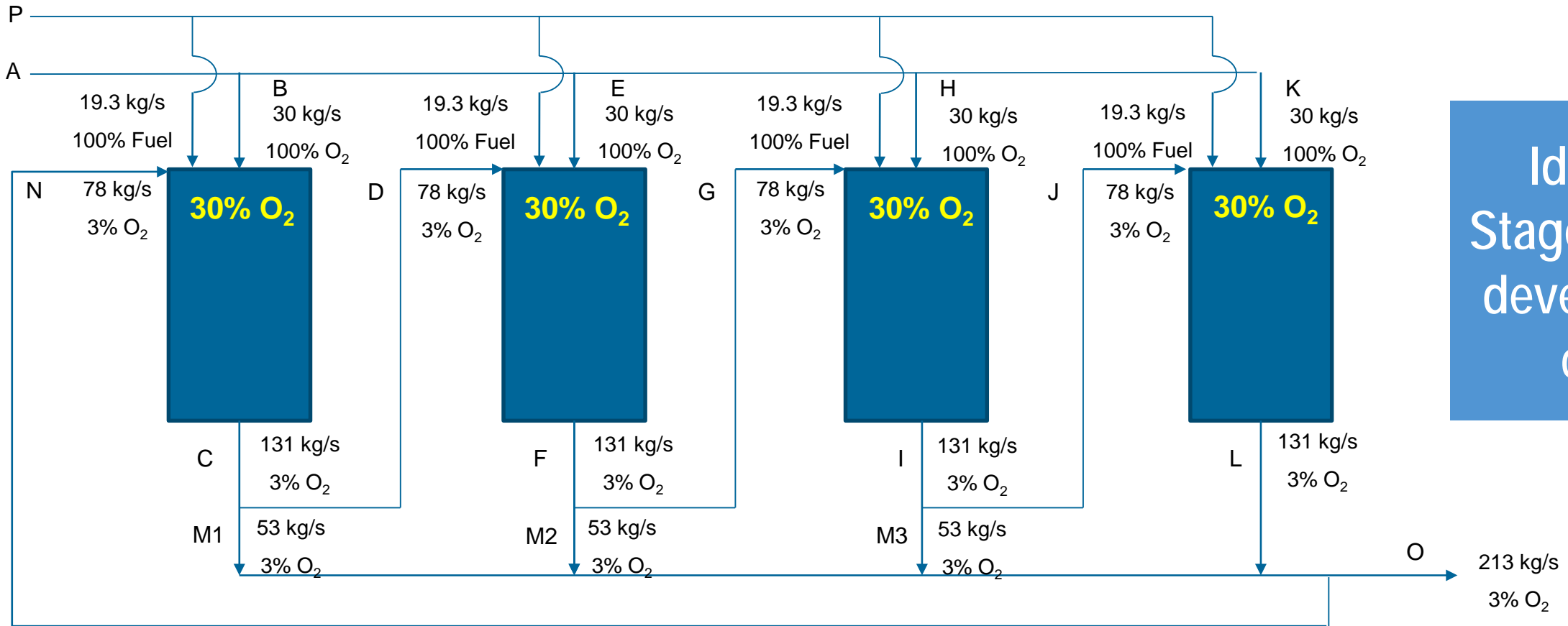
Task 2 – Original SPOC Concept



Each stage has unique performance requirements

	A	B	C	D	E	F	G	H	I	J	K
Total Flow (kg/s)	121.6	52	150	23	192	23	234	23.6	277	79	198
[O ₂] (% v.)	100	100	17	100	10	100	6	100	3	3	3
[CO ₂] (% v.)	0	0	48	0	52	0	54	0	56	56	56
[H ₂ O] (% v.)	0	0	35	0	38	0	40	0	41	41	41

Task 2 – Revised SPOC Arrangement

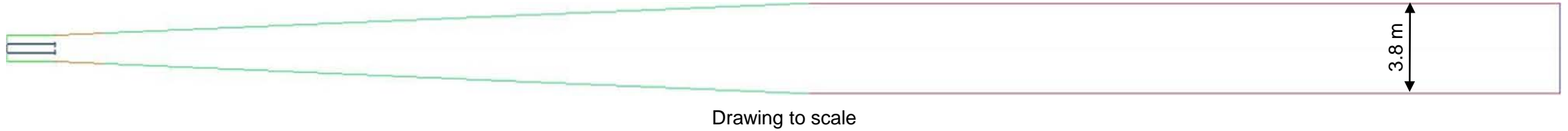


Identical Stages - lower development costs

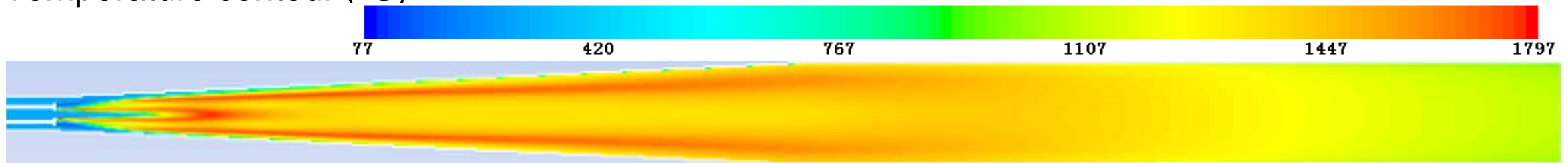
	A	B	C	D	E	F	G	H	I	J	K	L	M1	M2	M3	N	O
Total Flow (kg/s)	122	30.4	131	77.8	30.4	131	77.8	30.4	131	77.8	30.4	131	53.2	53.2	53.2	53.2	213
[O ₂] (% v.)	100	100	3	3	100	3	3	100	3	3	100	3	3	3	3	3	3
[CO ₂] (% v.)	0	0	56	56	0	56	56	0	56	56	0	56	56	56	56	56	56
[H ₂ O] (% v.)	0	0	41	41	0	41	41	0	41	41	0	41	41	41	41	41	41

Task 2 – Combustion – Long conical design

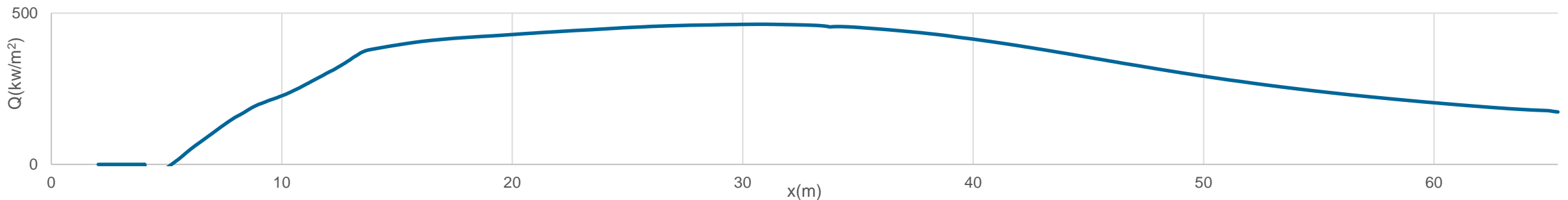
- PRB coal; 385MW; 30%/70% of O₂/CO₂; Particle size: 40% 1.6~2.0 mm, 60% 10~200 μm.



- Temperature contour (°C)



- Total surface heat flux (kW/m²)



Complex furnace tube geometry needed in upper sections

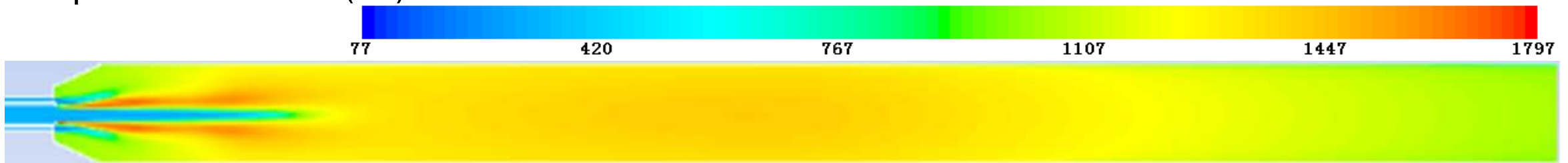
2.3 – Combustion – Revised design

- Same conditions as previous case except particle size is 50% 1.4~1.8 mm, 50% 10~200 μm

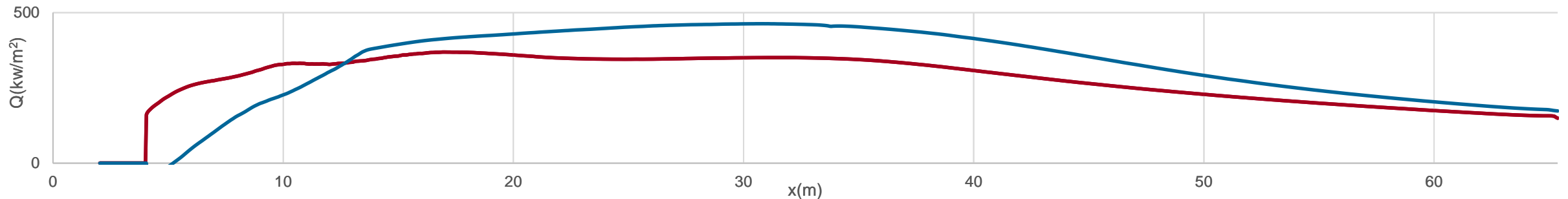


Drawing to scale

- Temperature contour ($^{\circ}\text{C}$)



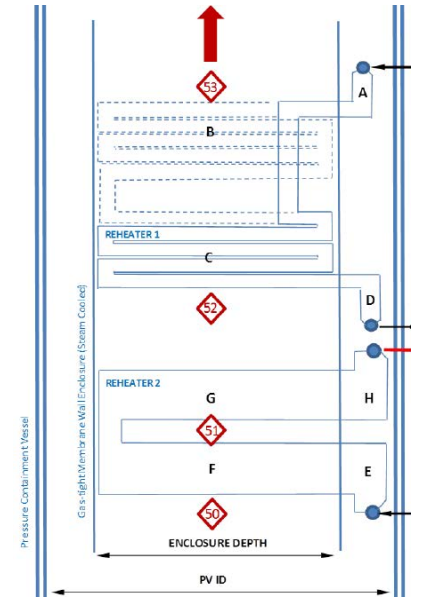
- Total surface heat flux (kW/m^2)



Simplified SPOC for reduced capital costs and lower peak heat flux

Task 2 – 550MWe Design

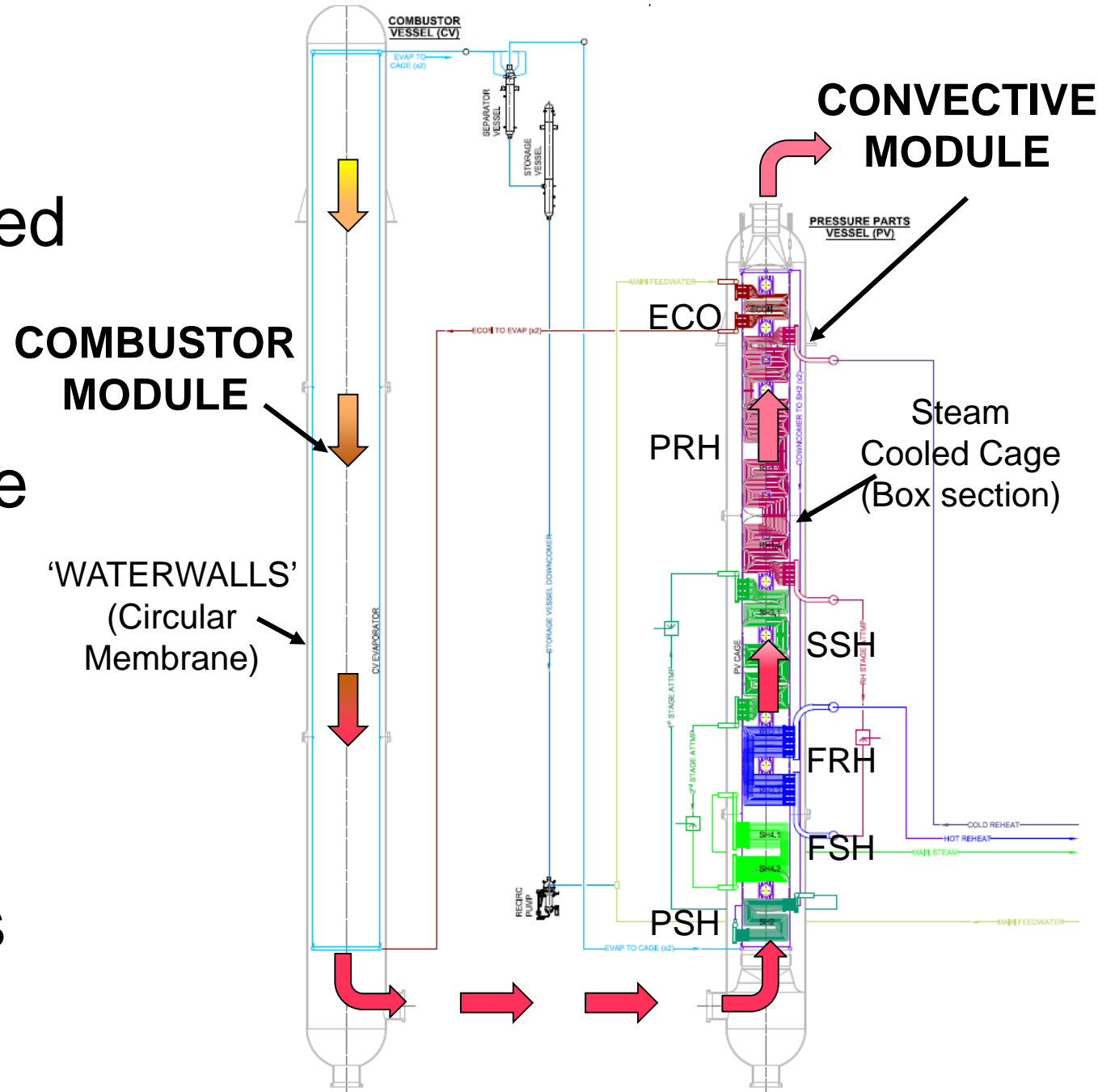
- Aim to reduce construction costs
- Single boiler design across all stages
- Modular and ground transportable
- Sequential gas bed concept
- Hot FGR ensures stage 1 identical to subsequent stages
- Steam/water equally shared across all stages
 - Mass flux / geometry / tube selection
 - Cage design, accommodation of headers/supplies/risers



Identical furnace and boiler stages reduces cost and complexity

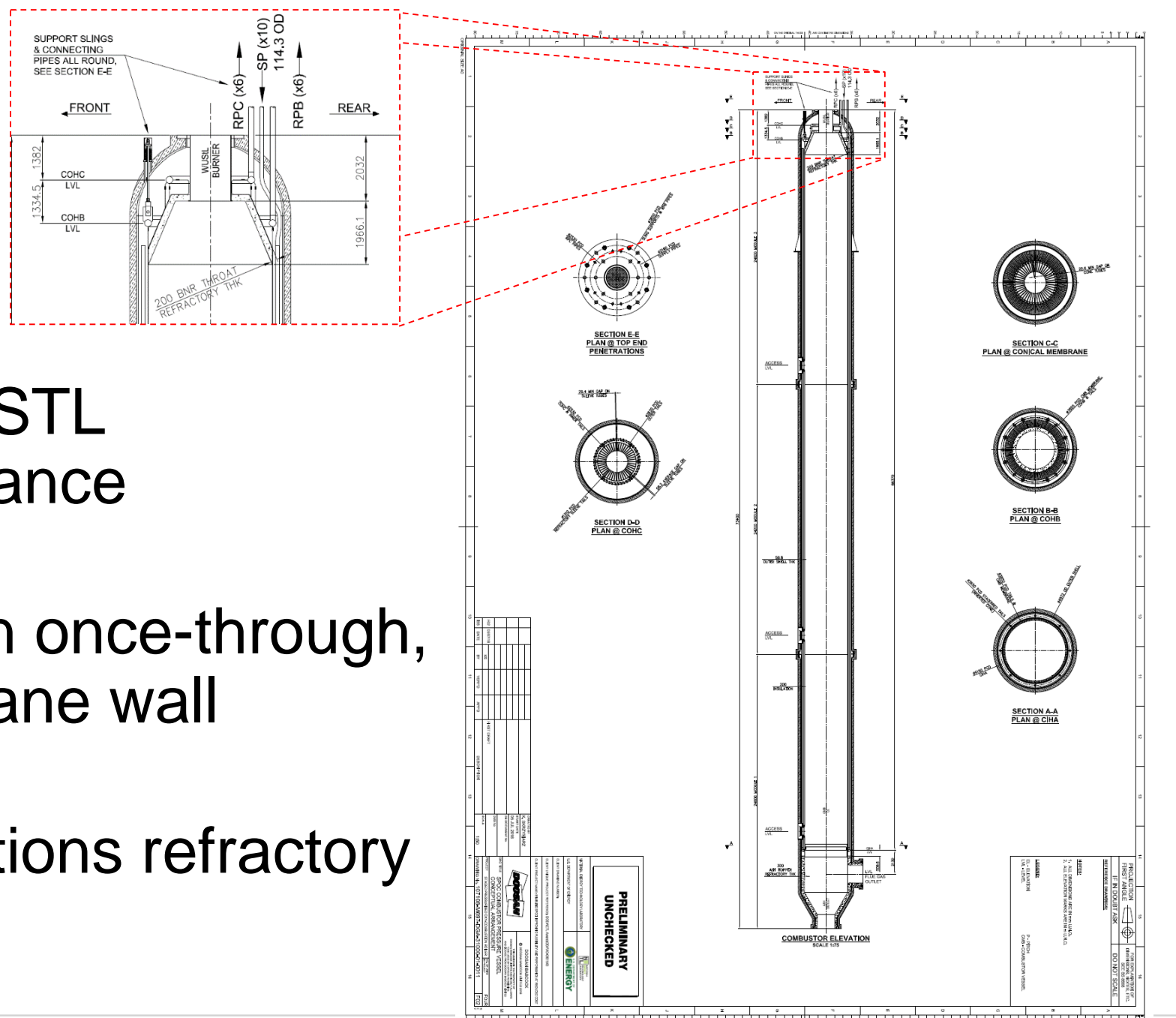
Task 2 – Module Design

- Two pressure vessels needed for a single SPOC ‘stage’
- Combustor module cooled with evaporative surface due to high incident heat flux
- Direction change at base to aid furnace ash dropout
- Convective pass headers contained within PV cavities (minimize penetrations)



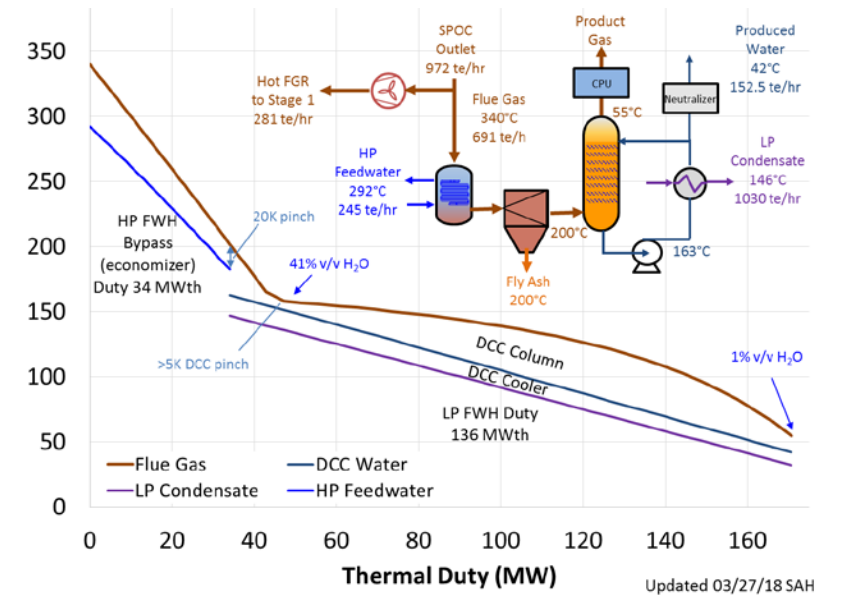
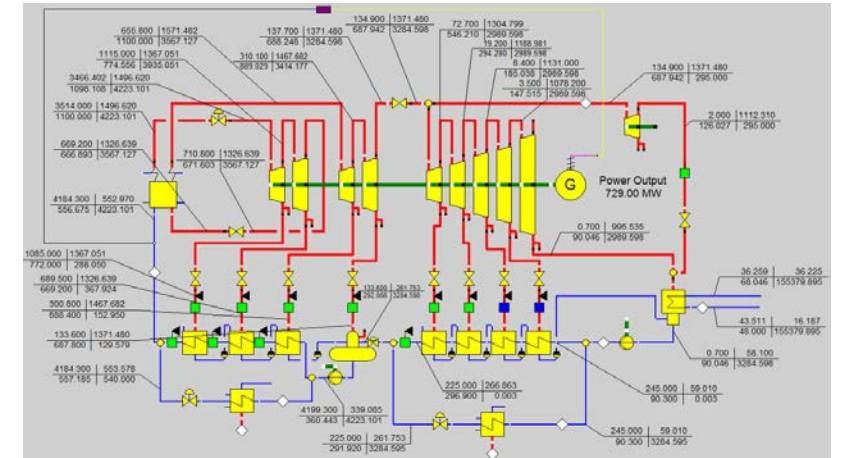
Task 2 – Combustor Module Concept

- Sized based on WUSTL combustion performance predictions
- Evaporator based on once-through, vertical tube membrane wall arrangement
- Top and bottom sections refractory lined



Task 3 – Integration with steam cycle

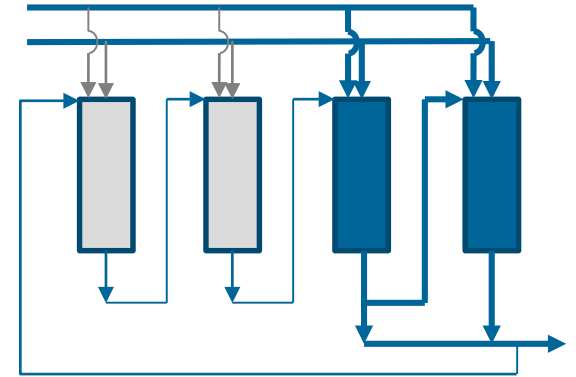
- NETL baseline case S12A modeled
- Assessment of heat recovery available
- 34 MWth available at sufficient temperature for HP feedwater bypass
- 136 MWth available at lower temperatures from DCC/acid gas removal column
- Corrosion resistant materials needed due to high acid dew point at pressure



Low temperature heat available sufficient to eliminate LP feedwater heaters

Task 4 – Flexibility

- Stage Bypass Potential
 - at reduced firing rates on proceeding stages, full bypass of subsequent stages is possible with Concept 3 arrangement
 - NFPA-85 compliance, purge flow before stage restart
- Increased FGR at low load
 - Improved convective/radiative balancing
- Air Separation Unit
 - Storage of air inventory to allow MAC ‘deferment’
 - Reduced LOx storage, maintain 8 hour startup oxygen supply

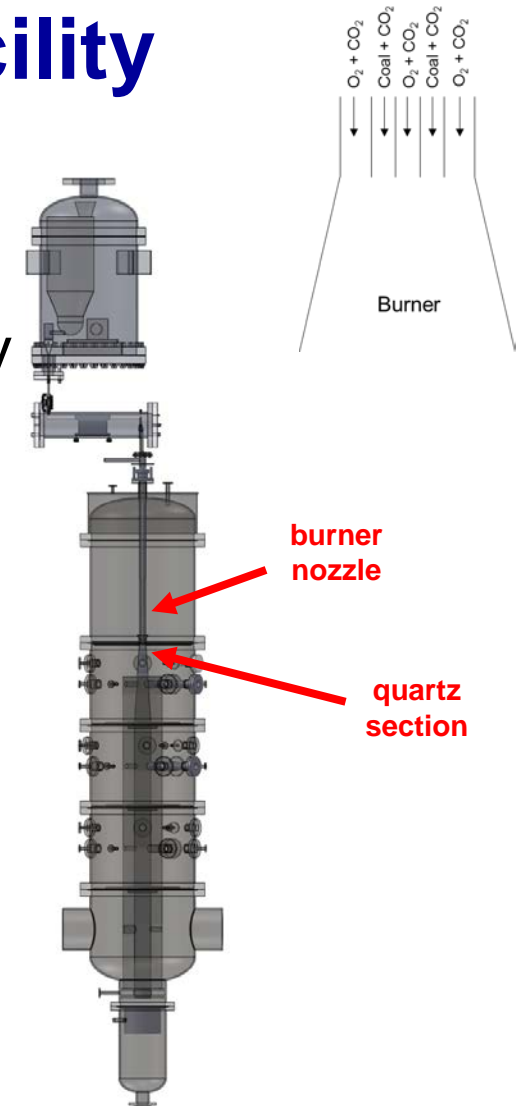


Staged system delivers high turndown potential

Task 5 – WUSTL Pressurized Combustion Facility



- Pressures up to 15 barg
- Thermal input up to 100 kW
- Solid and gaseous fuel testing capability
- Full view of near-burner (flame) region
- Diagnostics include:
 - Temperature profile
 - High Speed Camera
 - Heat Flux
 - Particle / gas sampling and ELPI, CEM
 - Laser transmission for soot/ash measurement
 - Fourier-transform infrared spectroscopy (FTIR)
- Ability to test multiple burners
 - Two types of burner configurations tested

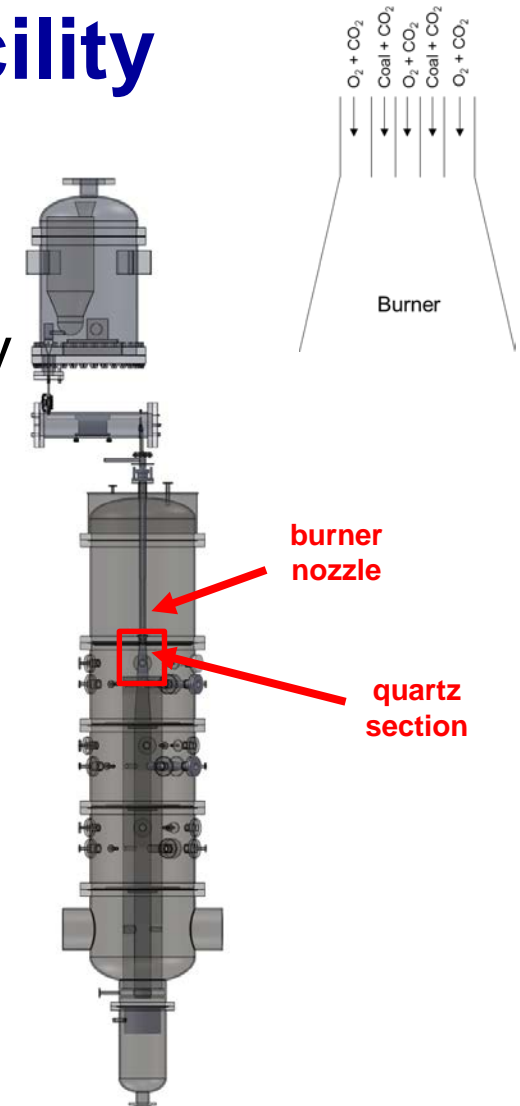


Multiple load cases planned for numerical model validation

Task 5 – WUSTL Pressurized Combustion Facility



- Pressures up to 15 barg
- Thermal input up to 100 kW
- Solid and gaseous fuel testing capability
- Full view of near-burner (flame) region
- Diagnostics include:
 - Temperature profile
 - High Speed Camera
 - Heat Flux
 - Particle / gas sampling and ELPI, CEM
 - Laser transmission for soot/ash measurement
 - Fourier-transform infrared spectroscopy (FTIR)
- Ability to test multiple burners
 - Two types of burner configurations tested

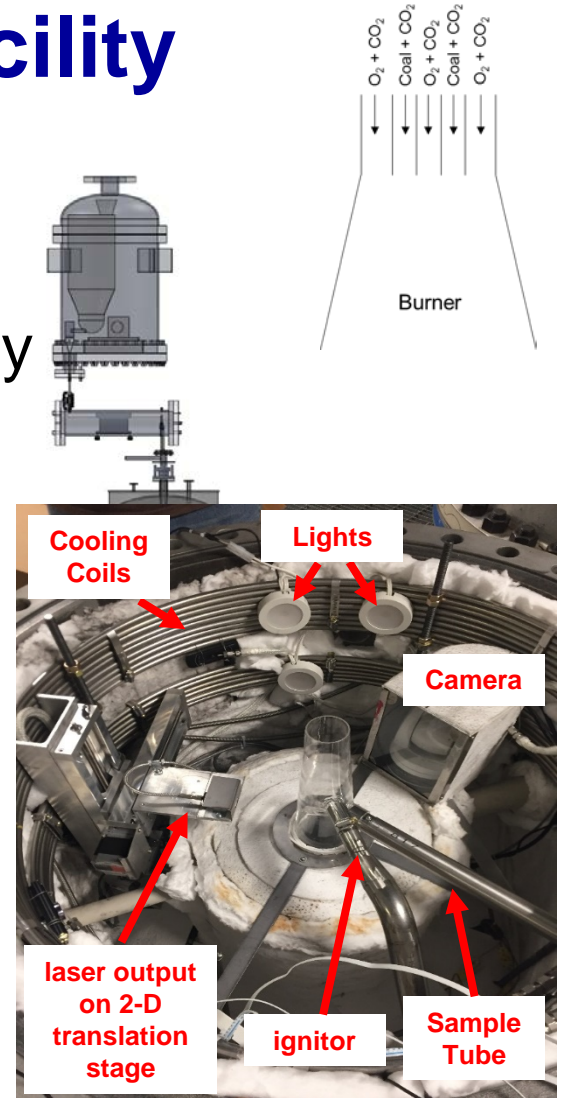


Multiple load cases planned for numerical model validation

Task 5 – WUSTL Pressurized Combustion Facility



- Pressures up to 15 barg
- Thermal input up to 100 kW
- Solid and gaseous fuel testing capability
- Full view of near-burner (flame) region
- Diagnostics include:
 - Temperature profile
 - High Speed Camera
 - Heat Flux
 - Particle / gas sampling and ELPI, CEM
 - Laser transmission for soot/ash measurement
 - Fourier-transform infrared spectroscopy (FTIR)
- Ability to test multiple burners
 - Two types of burner configurations tested



Multiple load cases planned for numerical model validation

Task 5 – Firing experience and validation



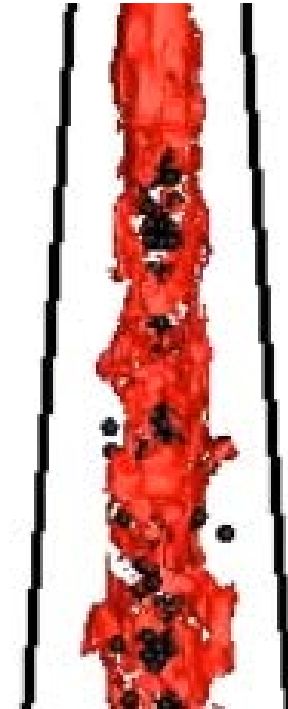
Video

Quartz
wall



HS Camera Video

Experiments from 1 bar to 15 bar conducted at WUSTL show similar characteristics.



LES Simulation

Qualitative agreement between experiments and simulations achieved in terms of flame shape and flow field

Task 5 – Firing experience and validation



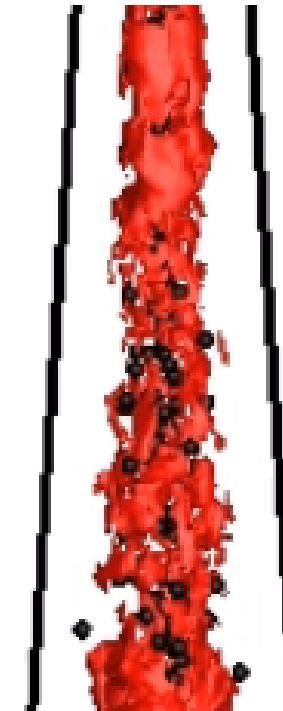
Video

Quartz
wall



HS Camera Video

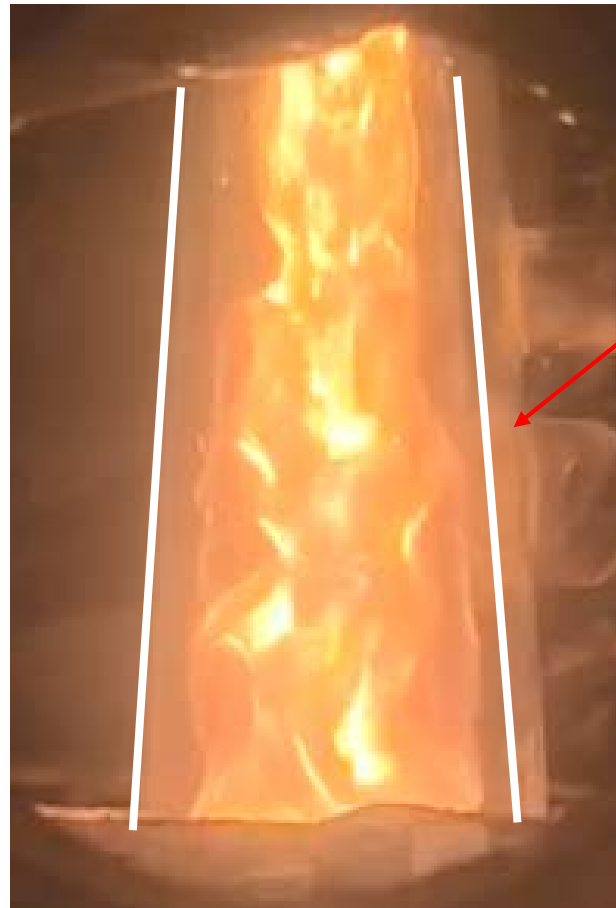
Experiments from 1 bar to 15 bar conducted at WUSTL show similar characteristics.



LES Simulation

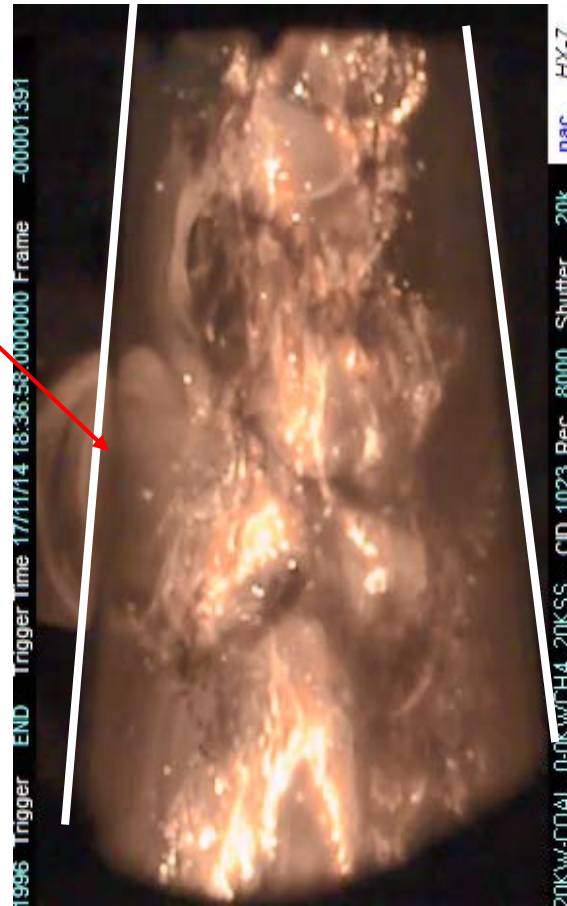
Qualitative agreement between experiments and simulations achieved in terms of flame shape and flow field

Task 5 – Firing experience and validation



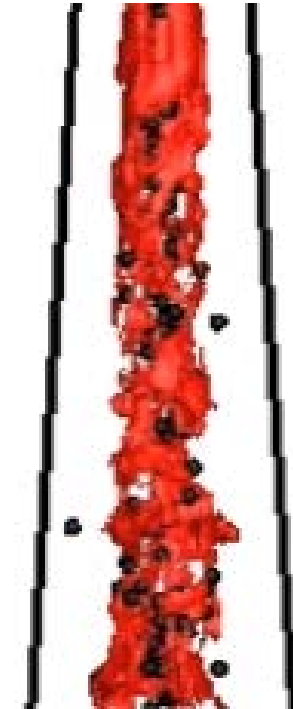
Video

Quartz
wall



HS Camera Video

Experiments from 1 bar to 15 bar conducted at WUSTL show similar characteristics.



LES Simulation

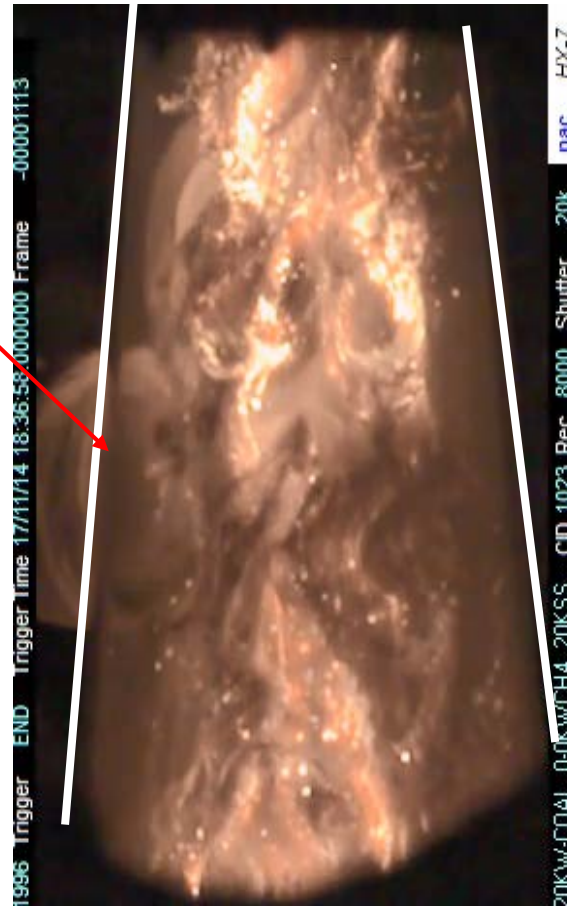
Qualitative agreement between experiments and simulations achieved in terms of flame shape and flow field

Task 5 – Firing experience and validation



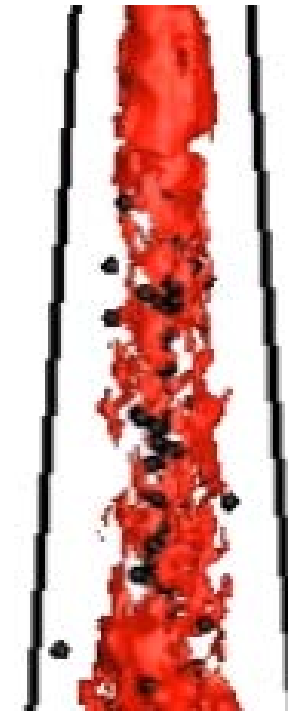
Video

Quartz
wall



HS Camera Video

Experiments from 1 bar to 15 bar conducted at WUSTL show similar characteristics.



LES Simulation

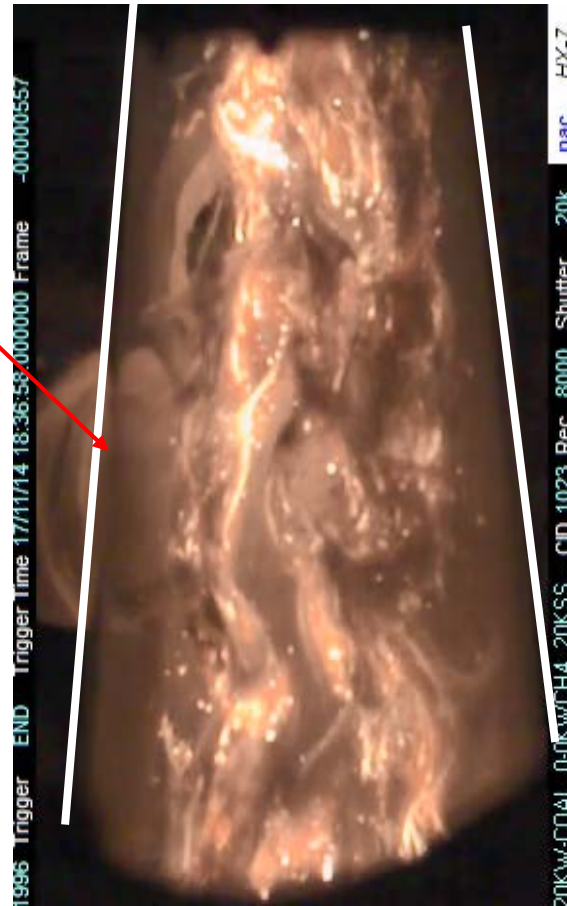
Qualitative agreement between experiments and simulations achieved in terms of flame shape and flow field

Task 5 – Firing experience and validation



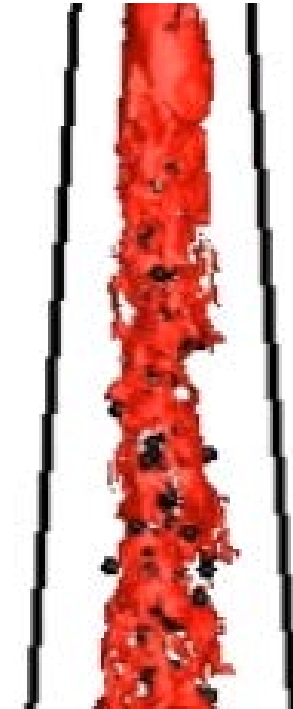
Video

Quartz
wall



HS Camera Video

Experiments from 1 bar to 15 bar conducted at WUSTL show similar characteristics.



LES Simulation

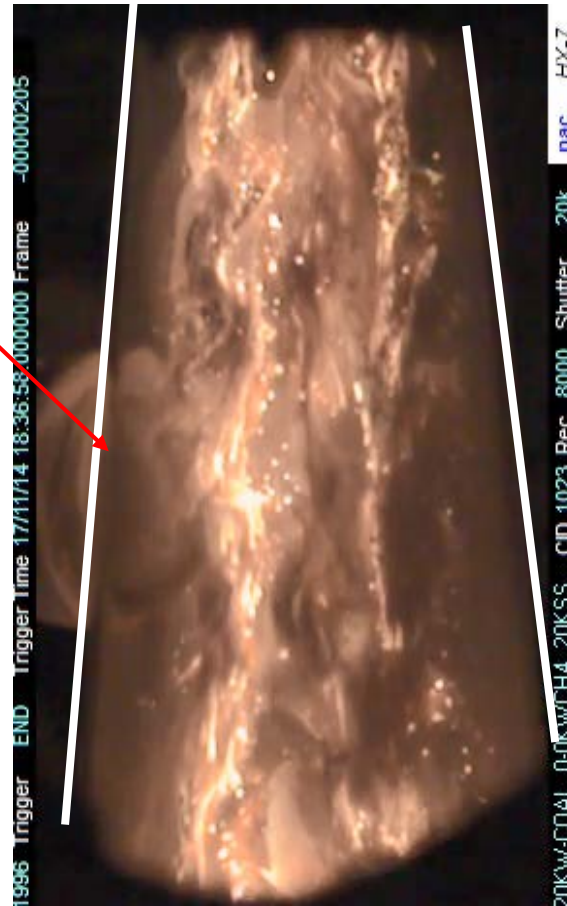
Qualitative agreement between experiments and simulations achieved in terms of flame shape and flow field

Task 5 – Firing experience and validation



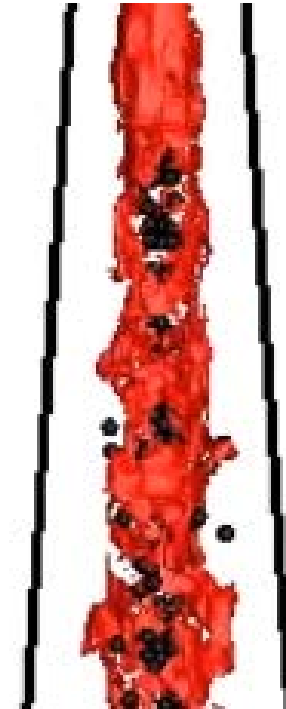
Video

Quartz wall



HS Camera Video

Experiments from 1 bar to 15 bar conducted at WUSTL show similar characteristics.

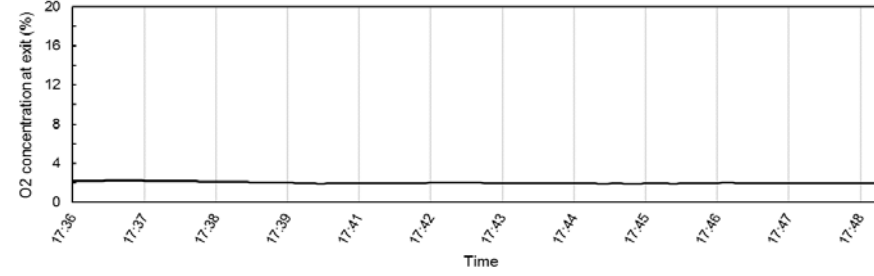
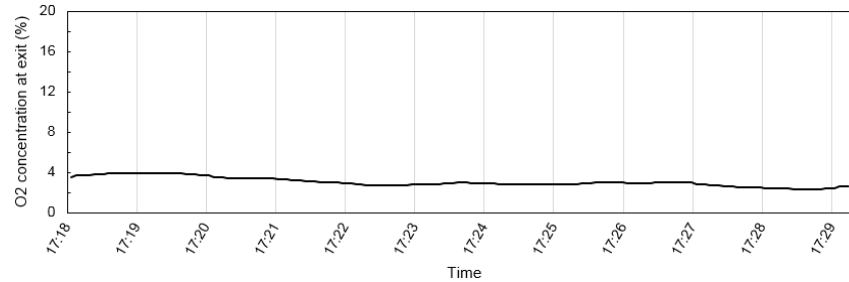
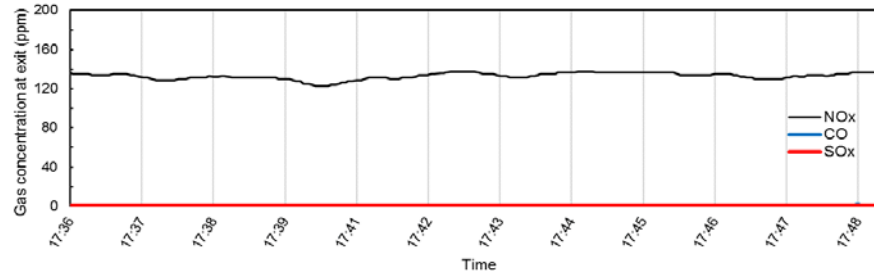
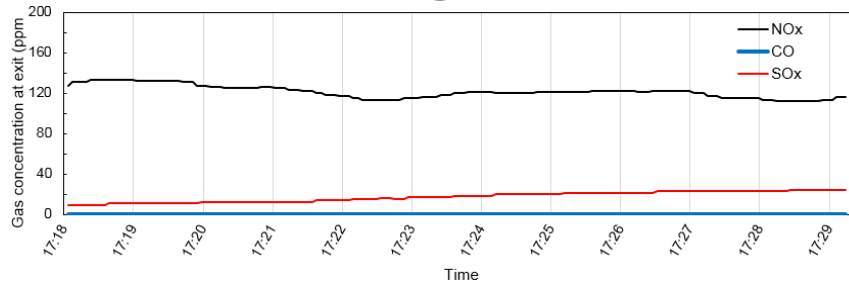
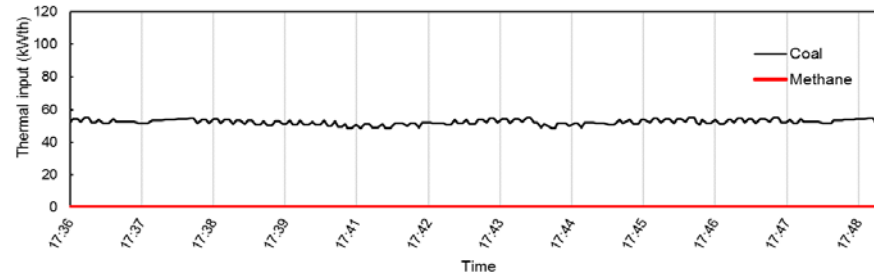
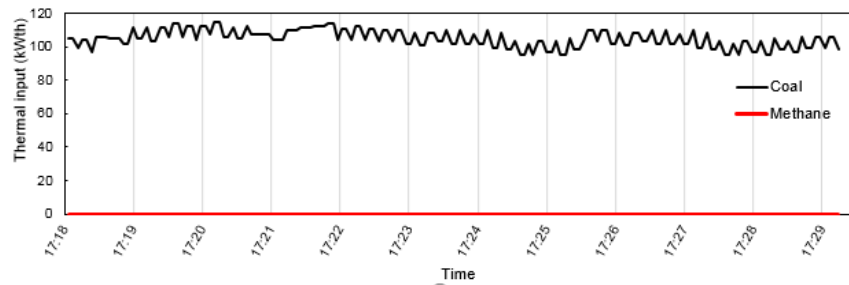


LES Simulation

Qualitative agreement between experiments and simulations achieved in terms of flame shape and flow field

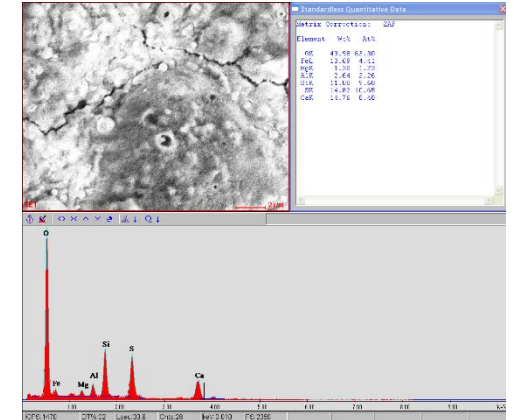
Task 5 – Operation: 100% coal combustion at 15 bar

- Stable flame without methane support
- No CO and soot emission detected
- Complete burnout with 3% oxygen concentration



Full Load (100 kWth)

Part Load (50 kWth)

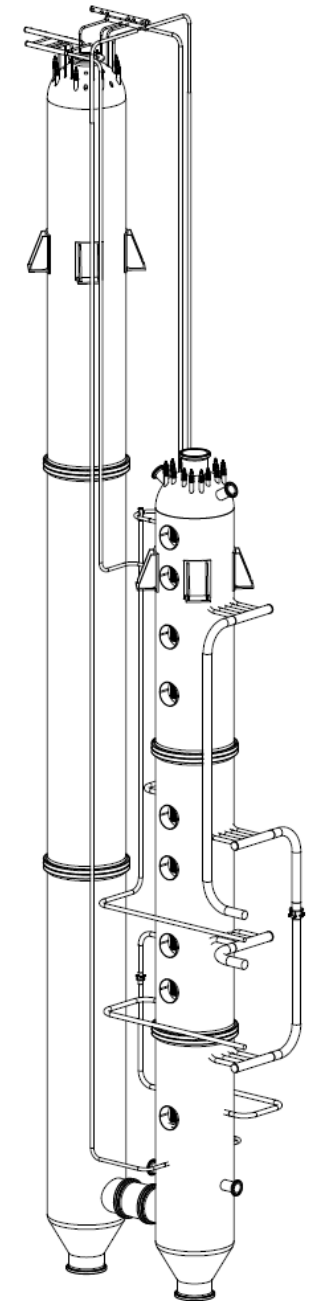
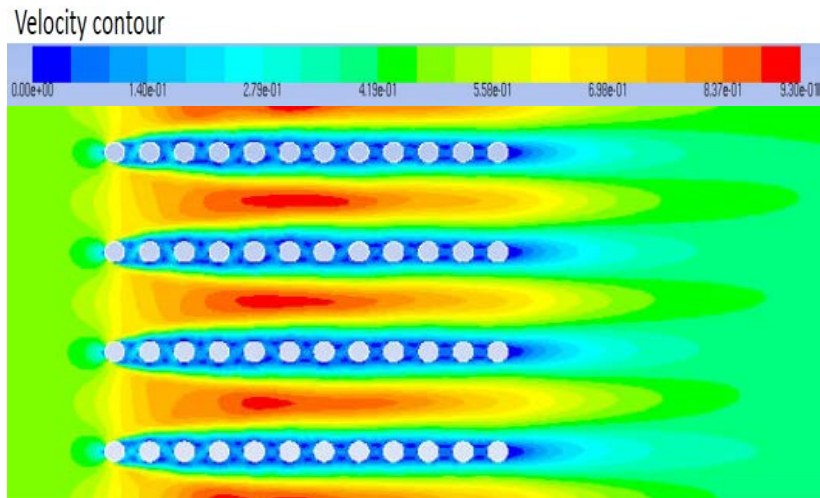


Ash analysis

Results used to validate CFD models for full scale application

Plans for future development

- Validation of modeling from test results
- Reduction of ASU auxiliary power and thermal integration
- Flexibility opportunities for oxygen supply
- Cost analysis of 550MW concept design



Questions





Together...Shaping the Future of Electricity