

0 0.2 0.4 0.6 0.8 1 1.2

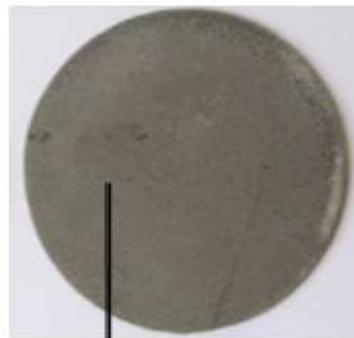
Current (A/cm^2)

Fuel Feed: 50 % vol CH_4 in He , 200sccm
SOFC Temperature = 750 °C

Electroless Plating of Copper on Ni/YSZ anode



NiO/YSZ



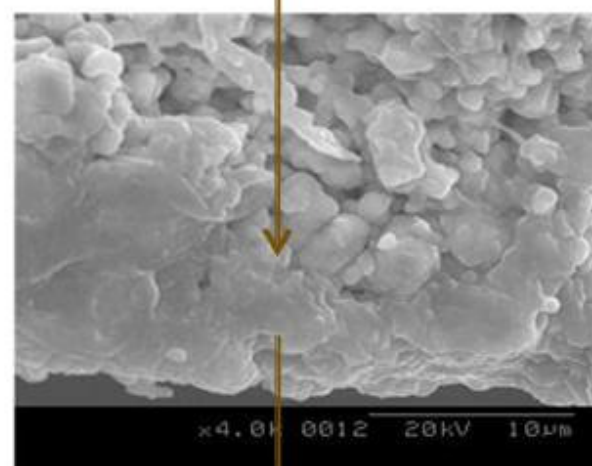
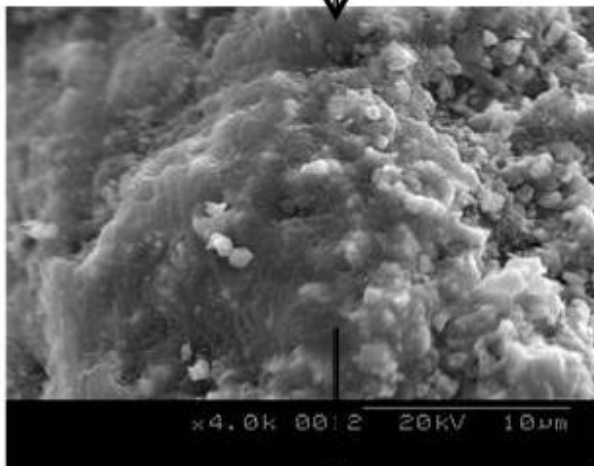
Ni/YSZ



Cu-Ni/YSZ



reduced Cu-Ni/YSZ



10 μm

