

RWFI BACKGROUND

REGIONAL WORKFORCE INITIATIVE

The NETL Regional Workforce Initiative (RWFI)

is a platform for engagement and collaboration with key stakeholders who are critical for the deployment of U.S. DOE and NETL Energy and Advanced Manufacturing technological research investments and breakthroughs. Started in 2017, the RWFI works to catalyze these investments into enduring economic development and workforce and job opportunities for the Appalachian region and the nation with an emphasis on NETL technologies in fossil, oil, natural gas, carbon capture and manufacturing. The RWFI focuses on ensuring that the region and nation have the world's best skilled energy technical workforce in these core areas to ensure economic competitiveness and promote job growth.

The Appalachian region:

- Is a historically critical region for energy production in the U.S. with a significant amount of energy and manufacturing related jobs in the region.
- Is an area that has been adversely affected by changes in energy extraction and related manufacturing activity and as such has historically struggled with enduring economic and workforce development opportunities.
- Will continue to be a strategically important area for fossil, oil, and natural gas energy extraction as well as related technologies in advanced manufacturing, artificial intelligence, supercomputing, and carbon capture technologies.
- Is uniquely primed for enduring jobs and economic growth powered by advancements in NETL research and innovations in energy and advanced manufacturing technologies.



To date, NETL RWFI has engaged with over 800 regional and national individual stakeholders from more than 400 institutions and organizations across academic, industrial, governmental, and non-governmental organizations and has helped catalyze over 2 million dollars in funding to the region. The NETL RWFI engages primarily through participation in regional stakeholder meetings (including hosting periodic stakeholder meetings with NETL staff and researchers), a monthly RWFI E-note, the NETL RWFI Website, and a bi-monthly NETL RWFI Webinar series which has seen over 2,000 registrants since its inception. More than 300 individuals subscribe to the NETL Regional Workforce E-Note, a monthly email-based communication that provides regional stakeholders information about upcoming grant opportunities related to energy and advanced manufacturing innovation, workforce and economic development topics, and other resources.

800+

individual regional
and national
stakeholders

400+

institutions and
organizations
represented

2000+

Registrants to the
NETL RWFI Webinar
Series

300+

Subscribed to the
NETL RWFI e-Note
Monthly Newsletter

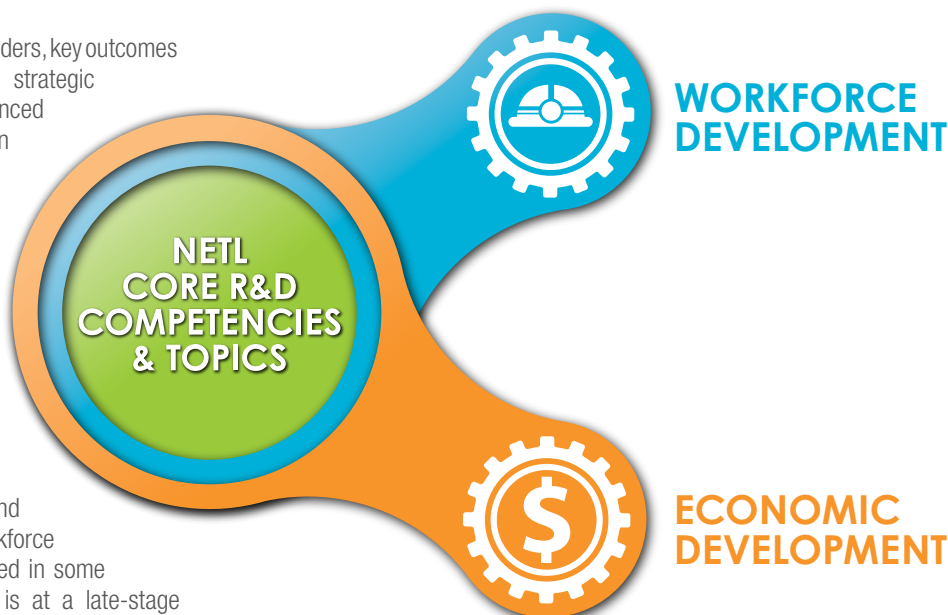
Catalyzed over 2.5M in energy/advanced manufacturing
workforce & economic development funding

WWW.NETL.DOE.GOV/RWFI

U.S. Department of
ENERGY

**NATIONAL ENERGY
TECHNOLOGY LABORATORY**

Beyond establishing a broad regional network of stakeholders, key outcomes from the NETL RWFI include the establishment of strategic regional partnerships focused on energy and advanced manufacturing research commercialization, innovation and deployment, and economic development and workforce. This includes collaborative efforts with the Appalachian Regional Commission (ARC) participating in and sharing subject matter expertise at ARC funded regional meetings and conferences, hosting a meeting with NETL and ARC federal co-chair, working together to identify funding opportunities for regional stakeholders and future collaborative efforts (for example, hosting a pilot workshop focused on entrepreneurship in energy and manufacturing with regional community colleges). It was through conversations with the ARC and ARC stakeholders in the region that the NETL RWFI Workforce Workplan was developed. This is a component included in some NETL funding opportunities wherein the technology is at a late-stage technology readiness level or near eventual commercialization that allows the observation of an awardee's workforce development plans with the intention to affirmatively match technology development needs with future workforce development opportunities, information potentially sharable to regional educational and workforce development efforts in the Appalachian region and the nation. This low-effort activity could have high-importance outcomes, as one of the most consistent issues common around advanced technology is having a sufficiently trained workforce for the new advances in energy and manufacturing technologies. This is a critical component of the deployment of DOE- and NETL-funded commercialized technologies, as well as increasing opportunities for job and workforce growth fueled by those technological advances. Additionally, in 2020, through collaborative efforts with NETL RWFI, ARC, and NETL came together to create the Advanced Welding Workforce Initiative, a partnership to invest approximately \$1 million in education and training for advanced technical workers in Appalachia.



NETL RWFI also maintains strategic partnerships with The Tri-State Energy and Advanced Manufacturing (TEAM) Consortium formerly known as Shale Net. TEAM has 19 higher education institutions, 14 workforce boards, 12 economic development entities, 12 private industry entities (some of which are networks with hundreds of members) and 8 other “intermediary” entities across the tristate region. Rounding out the key regional stakeholders list of NETL RWFI strategic partners is the Appalachian Regional Manufacturing Initiatives Workforce and Education groups (made up of the National Network for Manufacturing Innovation members — America Makes, Advanced Robotics Manufacturing, Rapid Advancement in Process Intensification Deployment, and the Institute for Advanced Composites Manufacturing Innovation) and the Appalachian regional network of Manufacturing Extension Partnerships. Together, these strategic partners represent a significant portion of the federal and non-federal regional efforts and facilitators focused on energy and manufacturing workforce and economic development. Thus, the NETL RWFI's focus is to unleash the benefit of the DOE and NETL's focus and federal investments in energy and advanced manufacturing technologies to the economic benefit of the region and the Nation with strategic partnerships that are consistent, measurable, and substantive, with a focus on outcomes-oriented activities that align with the goals and mission of DOE, and NETL.

CONTACTS

Anthony Armaly
NETL RWFI Federal
Coordinator
412-386-6040
Anthony.Armaly@netl.doe.gov

Kirk Gerdes
Regional Workforce Initiative
Coordinator
304-285-4342
Kirk.Gerdes@netl.doe.gov

Mike Knaggs
Associate Director
of Partnerships
304-285-4926
Michael.Knaggs@netl.doe.gov

Matthew Garcia
Regional Workforce Initiative
Consultant
956-314-0645
Matthew.Garcia@netl.doe.gov