

Confederated Tribes of Warm Springs (CTWS) : Regional 500kV Transmission Innovative Partnership

The Confederated Tribes of Warm Springs (CTWS or Tribes) and Portland General Electric (PGE) propose an innovative partnership approach to developing transmission capacity within Oregon that will address Tribal, DOE, State, and PGE objectives



\$250,000,000	REQUESTED FUNDS
\$363,953,472	APPLICANT COST SHARE
\$613,953,472	TOTAL PROJECT

PROPOSED PROJECT GOALS

- Enhance grid flexibility and the resilience of the West Coast power system to ever-evolving security and meteorological threats;
- Upgrade the reliability of power sector infrastructure, measurably increase the energy security of Pacific Northwest communities (particularly those located on Tribal lands), and ensure that all communities in PGE’s service territory have access to clean, affordable and reliable electric power;
- Strengthen CTWS’ ability to enter into mutually beneficial partnerships (with PGE and others) to achieve shared clean energy objectives; and
- Accelerate the deployment of these crucial regional transmission system capacity, reliability, security and wildfire protection upgrades while transforming the energy and economic futures of Tribal members, making them full partners in Oregon’s major east-west transmission corridor.

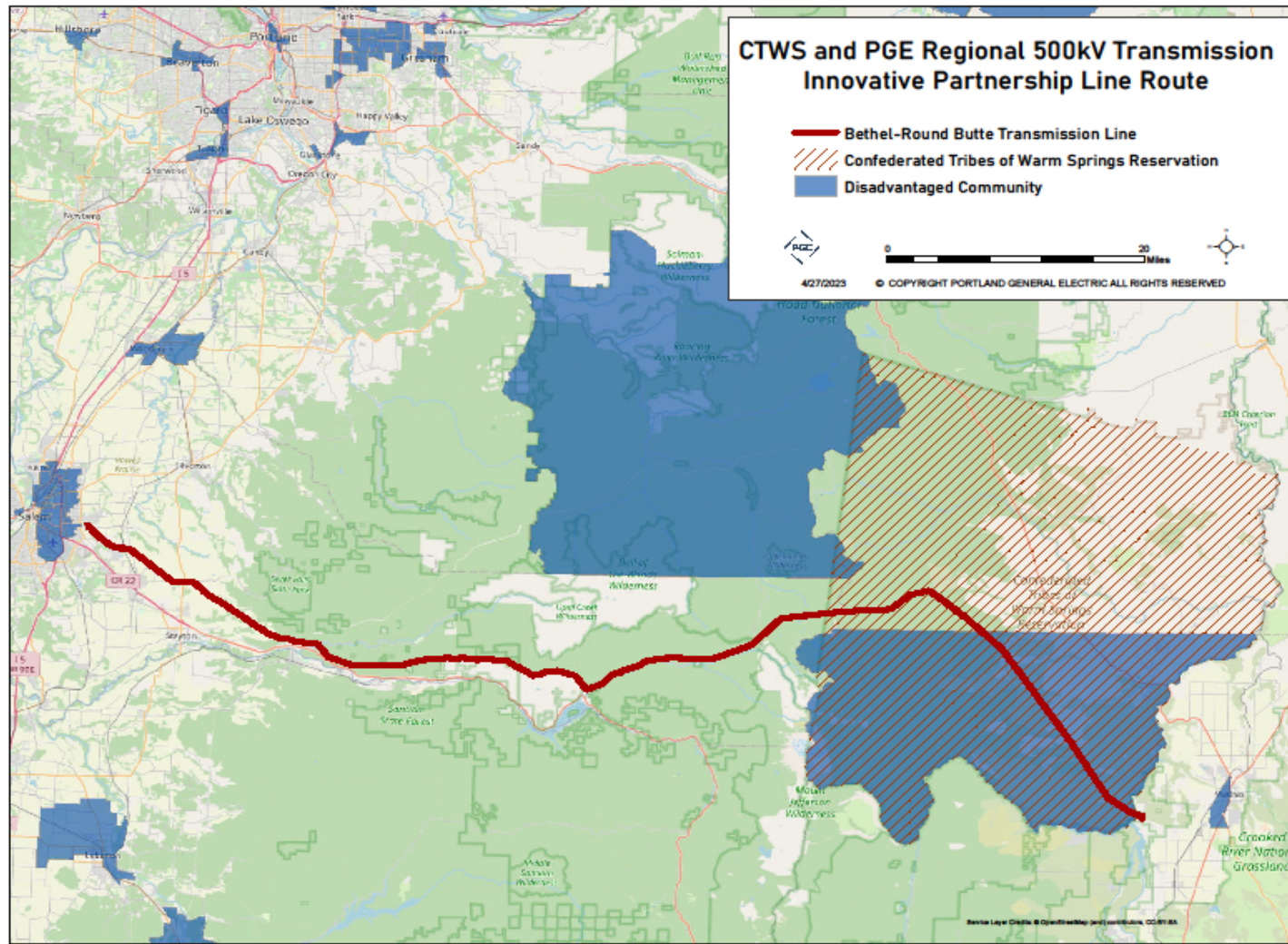
TECHNOLOGY SUMMARY		GRID BENEFITS		KEY PROJECT PERSONNEL	
<ul style="list-style-type: none">Decommission the existing Bethel – Round Butte 230 kV transmission lineRebuild the corridor as a new 500 kV transmission lineInstall new high-capacity fiber-optic cables along the entire transmission route to provide enhanced system protection and regional communications resiliencyConstruct new 500 kV substation facilities at the termination points for interconnection into the transmission networkReinforce existing transmission facilities at both termination points to allow greater energy transfer with the new transmission line	TITLE	EXPLANATION	Name	Role	
	1	Access to Affordable and Reliable Clean Energy	Upgrading PGE's transmission infrastructure will allow communities across the region to cost-effectively access locally-generated zero-carbon energy to power homes and businesses	Cathy Ehli	Executive Director, Warm Springs Power & Water Enterprises
	2	Create Tribal Social and Economic Benefits	Increased Tribal revenues by unlocking up to 1,200 MW of carbon-free energy generation for load centers in Western Oregon	Mike Lofting	Controller, Warm Springs Power & Water Enterprises
				Larry Bekkedahl	Executive Sponsor, PGE
	3	Align with State Decarbonization Mandates	Development of transmission capacity will spur renewable energy development on the Reservation which is critical to meeting bold zero-carbon and renewable energy targets established by the State of Oregon	James Landstrom	Infrastructure Program Director
Bill Messner				Grant Execution Program Director	
4	Improved Communications Reliability	Robust fiber-optic communications infrastructure across the Cascade Mountains shall increase the redundancy and resiliency of the grid’s control network and the reliability of the grid as a whole	Shaun Foster	Manager, Transmission, and Interconnection Contract Services	
TECHNICAL AND BUSINESS CONTACT					
Name: Cathy Ehli					
Title: General Manager, Warm Springs Power & Water Enterprises					
Organization: CTWS					
Email: Cathy.Ehli@wspower.com					

Project Schedule:

[illegible]

Confederated Tribes of Warm Springs (CTWS) and Portland General Electric (PGE) Regional 500kV Transmission Innovative Partnership

Impacted Communities:



- Tribal participation in the proposed transmission rebuild project and Tribal participation in solar development projects, dependent on the commissioning of this project, have the potential to **alleviate the persistent burdens faced by the Tribes** today
- Several inequalities and challenges afflict the Tribes. However, the most persistent ones include **lack of infrastructure** and **limited economic activity** due to distances from population centers in Oregon, **chronic poverty** with rates double that of the rest of Oregon, and **low education attainment rates** compared to Oregon averages
- Solar development projects will create **direct construction jobs within the Tribes**. Partnering with PGE allows the Tribe to leverage PGE's expertise in **workforce development and training** to bridge existing skill and education gaps amongst members of the Tribes.