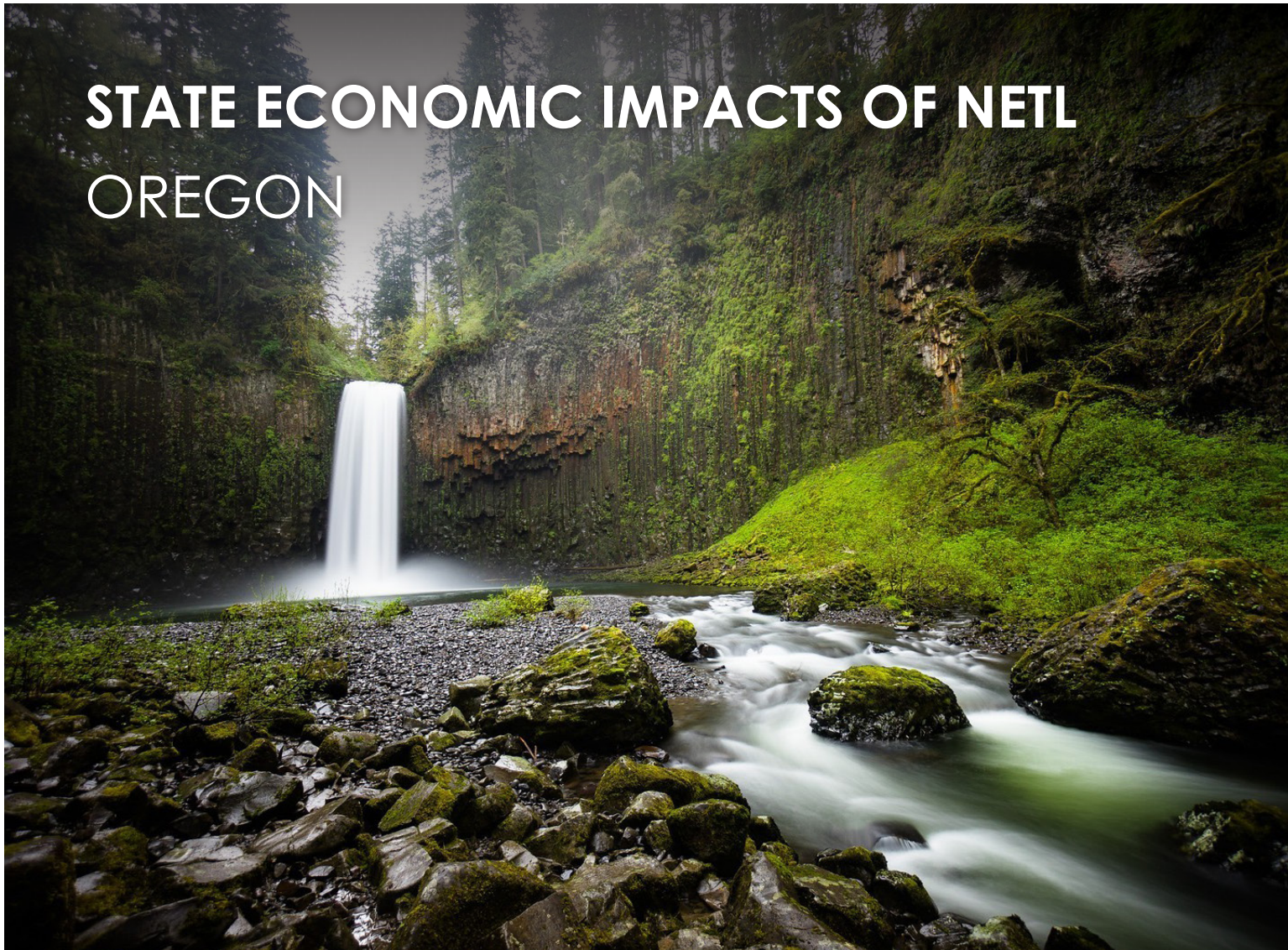


# STATE ECONOMIC IMPACTS OF NETL OREGON



# NETL

**NATIONAL ENERGY TECHNOLOGY LABORATORY**

The U.S. Department of Energy's National Energy Technology Laboratory (NETL) in Oregon is committed to discovering new metallurgical processes and advancing energy technologies. By designing, developing, and deploying advanced materials for energy applications and extreme environments, NETL has paved the way for new industries and job opportunities. With specialized facilities for fabrication and performance testing of advanced materials, NETL is internationally recognized as a leader in the field. By expanding its computational capabilities, NETL addresses technical barriers to developing next-generation technologies. As a result of its research activities, science education programs, and employment opportunities, NETL serves as an important economic catalyst for Oregon.



# ECONOMIC IMPACTS OF NETL OREGON

NETL conducted an economic analysis using a state-level input-output (IO) model to quantify the laboratory's economic impacts on Oregon. The two tables below summarize NETL's impacts on Oregon's economy in 2022.

The first table includes employment and salaries of individuals employed in Oregon at NETL as either federal employees or site support contractors (full-time equivalents), as well as NETL's spending on grants, R&D awards, contracts, cooperative agreements, and purchase orders, within Oregon. The analysis revealed that NETL injected \$26 million (\$26M) directly into the state economy in 2022.

## Summary of NETL expenditures and number of employees (OR)

Impact Category	
Federal employment and Site Support Contractor (full-time equivalent jobs)	139
Total Expenditures	<b>\$26M</b>

NETL's impact on the U.S. economy is greater than the lab's total direct spending because the money is spent again by the recipient employees and businesses. This economic "ripple effect" is captured in the IO model through a series of multipliers that provide estimates of the impact of each dollar of direct spending cycling through the state economy in the form of additional (indirect and induced) spending, personal income, and employment. The analysis concluded that NETL had a total estimated impact of \$47 million (\$47M) on Oregon's economy in 2022 (see table below).

## NETL's Total Economic Impact on the State of Oregon, 2022

Impact Category	
Jobs (direct, indirect, and induced full-time equivalent jobs)	303
Total Economic Impact (direct, indirect, and induced)	<b>\$47M</b>

NETL is a U.S. Department of Energy national laboratory that drives innovation and delivers technological solutions for an environmentally sustainable and prosperous energy future. Through its world-class scientists, engineers and research facilities, NETL is ensuring affordable, abundant and reliable energy that drives a robust economy and national security, while developing technologies to manage carbon across the full life cycle, enabling environmental sustainability for all Americans, advancing environmental justice and revitalizing the economies of disadvantaged communities. Leveraging the power of workforce inclusivity and diversity, highly skilled innovators at NETL's research laboratories in Albany, Oregon; Morgantown, West Virginia; and Pittsburgh, Pennsylvania conduct a broad range of research activities that support DOE's mission to ensure America's security and prosperity by addressing its energy and environmental challenges through transformative science and technology solutions.