



# NETL Life Cycle Inventory Data

## Process Documentation File

**Process Name:** Underground Mine, Southwest Bituminous Coal, Operation  
**Reference Flow:** 1 kg of Southwest Bituminous Coal  
**Brief Description:** Based on the Illinois No. 6 underground, bituminous coal mine unit process. Assumes all underground mining to be similar; 116.4 cubic feet/short ton coalmine CH<sub>4</sub> (CMM) emissions, adjustable CMM capture rates; LHV=12300 Btu/lb.

---

### Section I: Meta Data

---

**Geographical Coverage:** US **Region:** Wyoming  
**Year Data Best Represents:** 2004  
**Process Type:** Extraction Process (EP)  
**Process Scope:** Cradle-to-Gate Process (CG)  
**Allocation Applied:** No  
**Completeness:** All Relevant Flows Recorded  
**Flows Aggregated in Data Set:**  
 Process     Energy Use     Energy P&D     Material P&D

#### Relevant Output Flows Included in Data Set:

Releases to Air:     Greenhouse Gases     Criteria Air Pollutants     Other  
Releases to Water:  Inorganic Emissions     Organic Emissions     Other  
Water Usage:     Water Consumption     Water Demand (throughput)  
Releases to Soil:     Inorganic Releases     Organic Releases     Other

#### Adjustable Process Parameters:

Coal mine methane emissions (CMM)    *Emissions of coal mine methane (CMM) from the coal mine and from mined coal*

#### Tracked Input Flows:

Diesel [Crude oil products]    *Diesel (from crude oil) usage for mine operations*

Power [Electric power]    *Electricity usage for mine operations*



---

# NETL Life Cycle Inventory Data

## Process Documentation File

---

### Tracked Output Flows:

Hard Coal (Southwest) [Hard Coal Products] *Coal mine production flow for Southwest bituminous coal*

---

## Section II: Process Description

---

### Associated Documentation

This unit process is comprised of this document, as well as the data sheet (DS) *DS\_Stage1\_O\_Underground\_Coal\_Mine\_Southwest\_2011.01.xls*, which provides additional details regarding calculations, data quality, and references as relevant.

### Goal and Scope

The scope of this process covers the production of coal during operation of an underground coal mine, from resource extraction to the boundary for Life Cycle (LC) Stage #2 (e.g., transport of coal). The process is based on the reference flow of 1 kg of cleaned, crushed (to approximately 3 inches) Southwest bituminous coal, as described below, and in **Figure 1**. Considered are the consumption of electricity, consumption of diesel, emissions of methane associated with off-gassing from the coal/coal mine, particulate matter emissions associated with fugitive coal dust, water input flows required for mining and cleaning operations, wastewater flows including stormwater, emissions of criteria air pollutants, and air emissions of mercury and ammonia.

### Boundary and Description

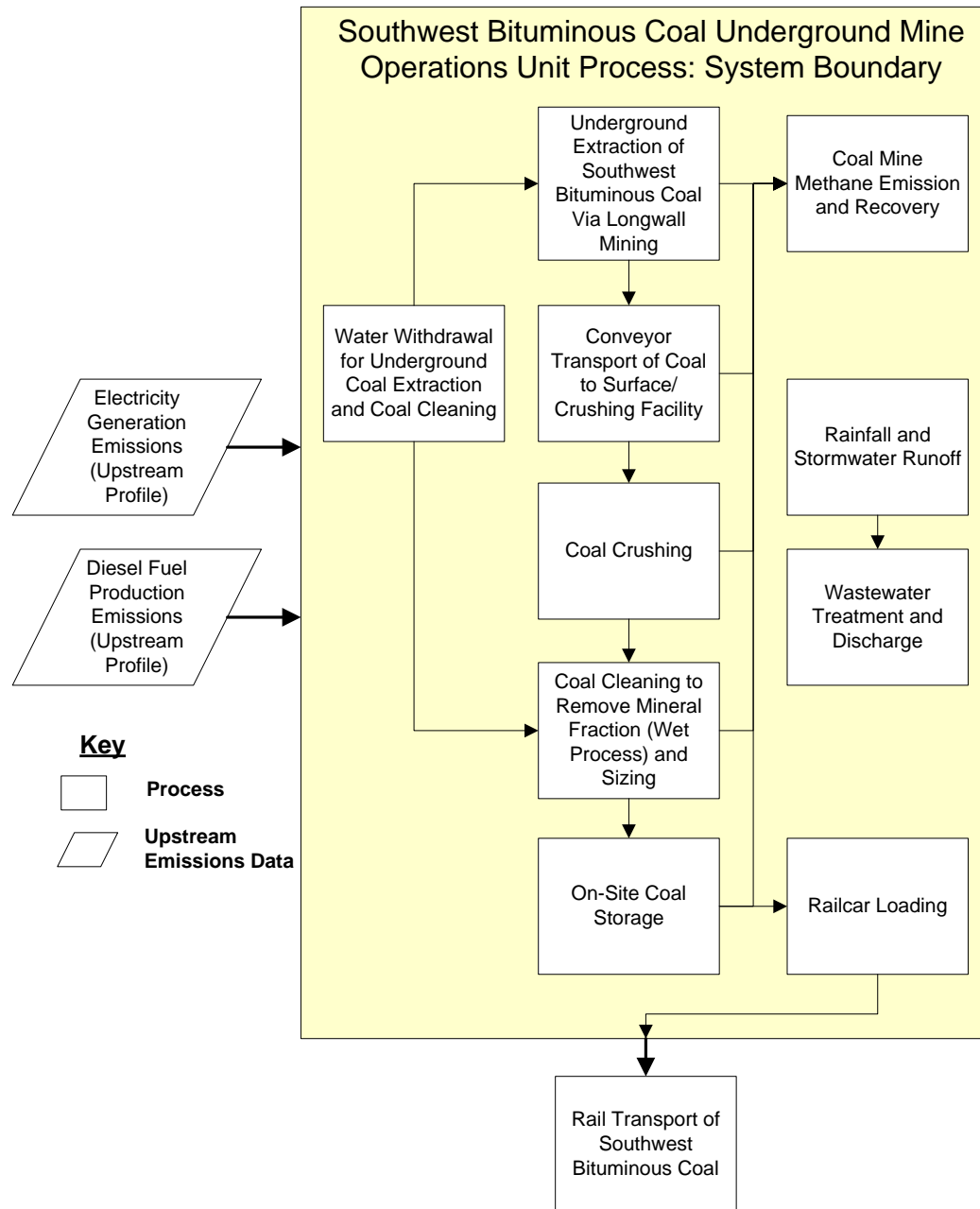
This unit process is a screening level data set. It was created using a previously created unit process with specific adjustments for the coal properties. The adjustments include the specific region and coal type's CMM and energy content values. This unit process is based on the Illinois No. 6 underground mining of bituminous coal. It is assumed that all underground mines have similar operation profiles.

Operations of the coal mine are based on operation of a representative mine, the Galatia Mine, an underground, bituminous Illinois No. 6 coal mine, having an average production rate of approximately 6.6 million short tons per year. The Galatia Mine is operated by the American Coal Company and is located in Saline County, IL. Sources reviewed in assessing coal mine operations include Galatia mine facilities and equipment, production rates, electricity usage, particulate air emissions, methane emissions, wastewater discharge permit monitoring reports, and communications with Galatia mine staff. When data from the Galatia mine were not available, surrogate data were taken from other underground mines, as relevant. It is assumed that the underground mine operations of a Southwest bituminous coal mine are similar to those at the Galatia Mine.

**Figure 1** provides an overview of the boundary of this unit process. Rectangular boxes represent relevant sub-processes, while trapezoidal boxes indicate upstream data that

are outside of the boundary of this unit process. As shown, upstream emissions associated with the production and delivery of electricity and diesel fuel are accounted for outside of the boundary of this unit process.

**Figure 1: Unit Process Scope and Boundary**



Coal is extracted from the underground Illinois No. 6 coal seam with wet-head longwall and continuous miners using a longwall mining process. It is assumed that the Southwest underground mines operate similarly. Coal is then loaded onto a conveyor for transport to the surface. At the surface, the coal continues along a conveyor to the crushing facility, where the coal is crushed to approximately 3 inch sizing. Coal then continues to the cleaning facility, where the mineral fraction (approximately 45% of

total coal mass) of the run-of-the mine coal is removed via a water-based cleaning and sorting process. The coal is then temporarily stored, until it is eventually loaded onto a railcar for rail transport. Stormwater, which generates on-site runoff from coal stockpiles and other facilities, is treated at a wastewater treatment plant, which discharges to a river. The wastewater treatment plant does not treat mining or coal cleaning process water. These systems are closed-loop in terms of water use, and generate no wastewater discharge.

Coal mine methane emissions from the coal mine, and from the extracted coal during processing and storage, were estimated based on U.S. EPA estimates of methane release for coal mines (U.S. EPA 2011). A 40% methane capture rate was used based on data for existing and potential recovery rates (U.S. EPA 2008), which resulted in a coal mine methane emission factor of 69.8 standard cubic feet per short ton of coal. For a sensitivity analysis, one may assume that no coal mine methane capture method was employed, by updating the appropriate adjustable parameter. It was assumed that all emitted methane was released to the atmosphere. The average Southwest coal deposit has 116.4 standard cubic feet of methane per short ton of coal. Other types of coal may have up to 360 standard cubic feet of methane per short ton of coal. Southwest bituminous coal has a lower heating value of 12,300 Btu/lb (U.S. EPA 2008).

Electricity use was estimated based on previous estimates made by U.S. EPA for electricity use for underground mining and coal cleaning at the Galatia Mine (U.S. EPA 2008). Diesel use was estimated for the Galatia mine from 2002 U.S. Census data for bituminous coal underground mining operations and associated cleaning operations (U.S. Census Bureau 2004).

Emissions of criteria pollutants were based on emissions associated with the use of diesel. U.S. EPA Tier 4 diesel standards for non-road diesel engines were used, since these standards would go into effect within a couple years of commissioning of the mine for this study (U.S. EPA 2004). Diesel is assumed to be ULSD (15 ppm sulfur). Emissions of particulate matter included those due to the combustion of diesel, as well as fugitive coal dust from the mining process. Total coal dust emissions from the Galatia Mine were used based on data for the mine (U.S. EPA 2005), and were normalized to the reference flow.

Water use was estimated by Galatia Mine staff (Personal Communication 2009). Water emissions data, including flows and concentrations of relevant inorganic constituents and biological oxygen demand, were taken from available National Pollutant Discharge Elimination System permit reporting documentation for Galatia Mine from 2005-2008 (NPDES 2008).

Properties of Southwest and Illinois No. 6 bituminous coal relevant to this screening level UP are indicated in **Table 1**. **Table 2** provides a summary of modeled input and output flows. Additional details regarding input and output flows, including calculation methods, are contained in the associated DS sheet.

**Table 1: Properties of Southwest and Illinois No. 6 Bituminous Underground Coal (NETL 2007; EPA 2011; EPA 2008)**

Rank	Bituminous	Bituminous
Seam	Illinois No. 6	Southwest
LHV, Btu/lb	11,252	12,300
CMM, scf/ton	360	116.4

**Table 2: Unit Process Input and Output Flows**

Flow Name*	Value	Units (Per Reference Flow)
<b>Inputs</b>		
<b>Power [Electric power]</b>	<b>3.31E-02</b>	<b>kWh</b>
Hard Coal (Southwest) [Hard coal (resource)]	1.00E+00	kg
<b>Diesel [Crude oil products]</b>	<b>3.10E-04</b>	<b>L</b>
Water (ground water) [Water]	3.45E-01	L
<b>Outputs</b>		
Hard Coal (Southwest) [Hard Coal Products]	1.00E+00	kg
Carbon dioxide [Inorganic emissions to air]	8.29E-04	kg
VOC (unspecified) [Organic emissions to air (group VOC)]	2.38E-07	kg
Methane [Organic emissions to air (group VOC)]	2.44E-03	kg
Nitrogen oxides [Inorganic emissions to air]	5.10E-07	kg
Nitrous oxide (laughing gas) [Inorganic emissions to air]	2.13E-08	kg
Sulphur oxide [Inorganic emissions to air]	7.82E-09	kg
Particulate Matter, unspecified [Other emissions to air]	1.25E-06	kg
Carbon monoxide [Inorganic emissions to air]	4.44E-06	kg
Mercury (+II) [Heavy metals to air]	4.08E-14	kg
Ammonia [Inorganic emissions to air]	3.40E-08	kg
Water (storm runoff) [Water]	9.92E-01	L
Total suspended solids [Particles to fresh water]	8.71E-06	kg
Iron [Heavy metals to fresh water]	1.02E-07	kg
Alkalinity [Inorganic emissions to fresh water]	8.30E-05	kg
Acidity [Inorganic emissions to fresh water]	0.00E+00	kg
Chloride [Fresh water]	2.27E-03	kg
Sulphate [Inorganic emissions to fresh water]	1.60E-04	kg
Biological oxygen demand (BOD) [Analytical measures to fresh water]	2.24E-08	kg

\* **Bold face** clarifies that the value shown *does not* include upstream environmental flows.

## Embedded Unit Processes

None.

## References

- NPDES 2008 Galatia Mine. 2005 through 2008. *NPDES Permit No. IL061727, Required Reports*. Galatia Mine, IL.
- NETL 2007 National Energy Technology Laboratory. 2007. *Cost and Performance Baseline for Fossil Energy Plants: Volume 1*. National Energy Technology Laboratory, U.S. DOE, Pittsburgh, PA. Report Number DOE/NETL-2007/1281.
- Personal Communication 2009 Personal communication with Galatia Mine chief engineer, March 13, 2009.
- U.S. Census Bureau 2004 U.S. Census Bureau. 2004. *Bituminous Coal Underground Mining: 2002*. U.S. Department of Commerce.  
<http://www.census.gov/prod/ec02/ec0221i212112.pdf> (Accessed March 18, 2009).
- U.S. EPA 2011 U.S. Environmental Protection Agency. 2011. *Inventory of U.S. Greenhouse Gas Emissions and Sinks: 1990-2009. Annex 3*. US EPA, Washington, DC. April 15, 2011. EPA 430-R-11-005.  
[http://epa.gov/climatechange/emissions/downloads11/US-GHG-Inventory-2011-Annex\\_Complete\\_Report.pdf](http://epa.gov/climatechange/emissions/downloads11/US-GHG-Inventory-2011-Annex_Complete_Report.pdf) (accessed July 25, 2011).
- U.S. EPA 2008 U.S. Environmental Protection Agency. 2008. *Identifying Opportunities for Methane Recovery at U.S. Coal Mines: Profiles of Selected Gassy Underground Coal Mines 2002-2006*. U.S. Environmental Protection Agency, Coalbed Methane Outreach Program. Report Number: EPA 430-K-04-003.
- U.S. EPA 2005 U.S. Environmental Protection Agency. 2005. *National Emission Inventory Database - Galatia Mine, IL*. EPA.  
<http://www.epa.gov/oar/data/neidb.html> (Accessed March 18, 2009).
- U.S. EPA 2004 U.S. Environmental Protection Agency. 2004. *Regulatory Announcement: Clean Air Nonroad Diesel Rule*. EPA 420-F-04-032. May 2004.

---

### Section III: Document Control Information

---

**Date Created:** July 23, 2011

**Point of Contact:** Timothy Skone (NETL), Timothy.Skone@NETL.DOE.GOV

**Revision History:**

Original/no revisions

**How to Cite This Document:** This document should be cited as:

NETL (2011). *NETL Life Cycle Inventory Data – Unit Process: Underground Mine, Southwest Bituminous Coal, Operation*. U.S. Department of Energy, National Energy Technology Laboratory. Last Updated: July 2011 (version 01).  
[www.netl.doe.gov/energy-analyses](http://www.netl.doe.gov/energy-analyses) (<http://www.netl.doe.gov/energy-analyses>)

---

### Section IV: Disclaimer

---

Neither the U.S. Department of Energy (DOE) National Energy Technology Laboratory (NETL) nor any person acting on behalf of these organizations:

- A. Makes any warranty or representation, express or implied, with respect to the accuracy, completeness, or usefulness of the information contained in this document, or that the use of any information, apparatus, method, or process disclosed in this document may not infringe on privately owned rights; or
- B. Assumes any liability with this report as to its use, or damages resulting from the use of any information, apparatus, method, or process disclosed in this document.

Reference herein to any specific commercial product, process, or service by trade name, trademark, manufacturer, or otherwise, does not necessarily constitute or imply its endorsement, recommendation, or favoring by NETL. The views and opinions of the authors expressed herein do not necessarily state or reflect those of NETL.