

AFDC & NREL Highlights

Wendy Dafoe & Margo Melendez

September 17, 2008

NREL Clean Cities Team

- Margo Melendez
- Wendy Dafoe
- Carol Darrow
- TBD Outreach
- TBD Engineer
- Mike Pacheco
- ICF*
- Jarett Zuboy*
- Debbie Brodt-Giles
- Karen Guilbeault
- Susie Jones
- Paul Bergeron
- Witt Sparks
- Caley Johnson
- Johanna Levene
- Nick Muerdter

* Subcontracted Support

2008 Was a Very Good Year!

AFDC Website Updates

- Light-duty diesel content enhancements – July 2008
- Emissions information enhancements – April 2008
- State focused pages created – June 2008
- Natural Gas Vehicle Technology Forum content added to AFDC and updated – August 2008
- Google based refueling station locator – July 2008
- Webcasts – 12 throughout the year
- Initiated RSS feed – October 2008
- Revamped Laws and Incentives Search – April 2008
- Updated and maintained Fleet Experiences – November 2007
- Technology Bulletins updated – Throughout 2008
- Data Analysis and Trends updated – Throughout 2008

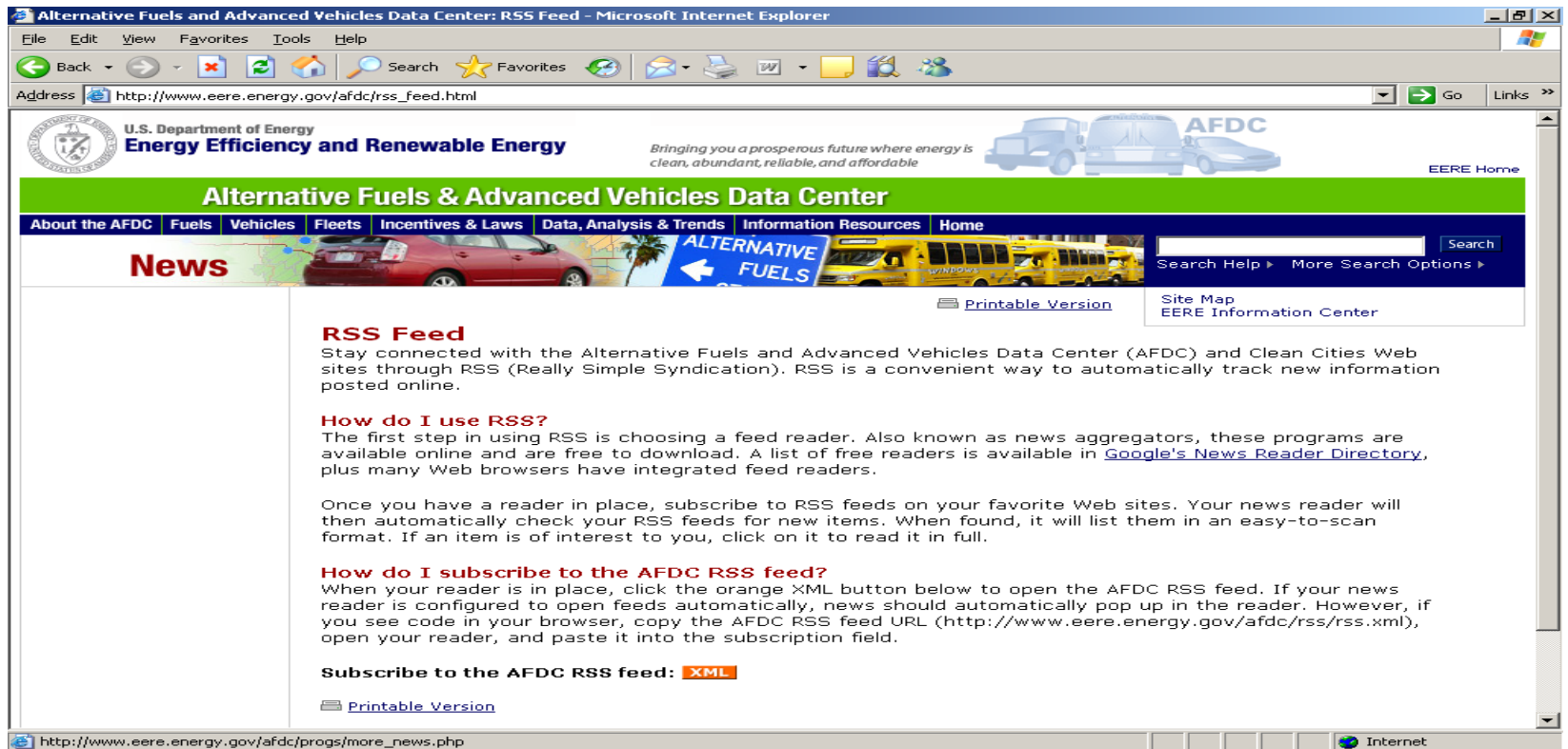
2008 Was a Very Good Year!

Fact Sheets and Print Publications

- CCN – January, April, July 2008
- Special 15th Anniversary issue of CCN – September 2008
- E85 Business Case Fact Sheet – February 2008
- E85 Handling and Use Handbook – April 2008
- Biodiesel Blends Fact Sheet – April 2008
- E85 Station Cost Report – March 2008
- Excise Tax Fact Sheet – April 2008
- Natural Gas Fact Sheet – Coming Soon
- FFV Conversion Fact Sheet – April 2008
- Colorado E85 Case Study – February 2008
- What is CC? – October, January, May, September 2008
- Minnesota E85 Case Study – August 2008

RSS Feed – are you signed up?

- All of the updates and pubs were announced in the RSS feed!
- Directions for signing up for AFDC's RSS feed at: http://www.eere.energy.gov/afdc/rss_feed.html



The screenshot shows a Microsoft Internet Explorer browser window displaying the "Alternative Fuels and Advanced Vehicles Data Center: RSS Feed" page. The browser's address bar shows the URL http://www.eere.energy.gov/afdc/rss_feed.html. The page header includes the U.S. Department of Energy logo and the text "Energy Efficiency and Renewable Energy". The main content area features a green banner for "Alternative Fuels & Advanced Vehicles Data Center" and a navigation menu with links for "About the AFDC", "Fuels", "Vehicles", "Fleets", "Incentives & Laws", "Data, Analysis & Trends", "Information Resources", and "Home". A "News" section is visible, with a sub-section titled "RSS Feed". The "RSS Feed" section contains the following text:

RSS Feed
Stay connected with the Alternative Fuels and Advanced Vehicles Data Center (AFDC) and Clean Cities Web sites through RSS (Really Simple Syndication). RSS is a convenient way to automatically track new information posted online.

How do I use RSS?
The first step in using RSS is choosing a feed reader. Also known as news aggregators, these programs are available online and are free to download. A list of free readers is available in [Google's News Reader Directory](#), plus many Web browsers have integrated feed readers.

Once you have a reader in place, subscribe to RSS feeds on your favorite Web sites. Your news reader will then automatically check your RSS feeds for new items. When found, it will list them in an easy-to-scan format. If an item is of interest to you, click on it to read it in full.

How do I subscribe to the AFDC RSS feed?
When your reader is in place, click the orange XML button below to open the AFDC RSS feed. If your news reader is configured to open feeds automatically, news should automatically pop up in the reader. However, if you see code in your browser, copy the AFDC RSS feed URL (<http://www.eere.energy.gov/afdc/rss/rss.xml>), open your reader, and paste it into the subscription field.

Subscribe to the AFDC RSS feed: [XML](#)

[Printable Version](#)

The browser's status bar at the bottom shows the URL http://www.eere.energy.gov/afdc/progs/more_news.php and the Internet icon.

2007 Survey Summary

- September 30: Publication of 2007 report
- December: One page coalition reports



2008 Survey Schedule

- December 1(ish): Open for 2008 reporting
- December: New and refresher training
- March: Final reporting deadline
- July: Quality checks complete
- September: Publication of 2008 report

2008 Survey Changes

- Add Congressional districts (NREL will populate – you'll just verify)
- Adding off-road section
- Eliminate inventory approach
- User input for % of time fuel used
- User input for % biodiesel blend used
- Improved printing formats

Survey Enhancements 2009

Annual Survey

- Open for reporting only
- Focus on petroleum displacement
 - Vehicles
 - Fuel
 - Technologies
- Streamline Inputs
- User friendly format
- Printable/publishable reports and summaries

Management Tool

- Open year-round
- Collect information for RDS
 - Reports
 - Events
 - Niche markets
 - Coalition structure

Natural Gas Activities Accelerating

- NGVTF
 - Updated NGVTF website
 - Engaging and cooperating with CEC and AQMD on upcoming projects
 - NGVTF meeting – November 2008
- Transit Users Group
 - Quarterly webcasts
 - Updated website
 - Coordination with Clean Cities
- New Publications
 - Updated fact sheet
 - New NG case study underway – refuse fleet
 - Business case assessment underway



Technical Response Service



Stacy got married
September 6th!

Current staffing:

- Stacy Putnam
- Alexis Castrovinci
- Emily Fraser

Send your questions
directly to:

technicalresponse@icfi.com

Use the Technical Response Service

Popular Topics

- Kits/generators/products that increase fuel economy
- Vehicles using water or air as fuel
- Conversion kits (CNG, LPG, plug-ins)
- Questions from stakeholders (emissions)
- Not so common research – do volcano eruptions spew more GHG emissions than humans?

Petroleum Reduction Planning Tool - PREP



U.S. Department of Energy
Energy Efficiency and Renewable Energy

*Bringing you a prosperous future where energy is
clean, abundant, reliable, and affordable*



[EERE Home](#)

Alternative Fuels & Advanced Vehicles Data Center

[About the AFDC](#) | [Fuels](#) | [Vehicles](#) | [Fleets](#) | [Incentives & Laws](#) | [Data, Analysis & Trends](#) | [Information Resources](#) | [Home](#)

[Help](#)

Petroleum Reduction Planning Tool

The Petroleum Reduction Planning tool helps fleets, consumers, and business owners create a strategy to reduce conventional fuel use in professional and personal vehicles. This interactive tool allows users to calculate petroleum reductions by choosing one or a combination of the following methods:

- Alternative Fuels
- Hybrid Electric Vehicles
- Fuel Blends
- Fuel Economy
- Vehicle Miles Traveled Reduction
- Idling Time Reduction
- Truck Stop Electrification
- Onboard Idle Reduction

Get Started

Guest User: No password is required.
Full planning functionality is provided but scenarios cannot be saved.

Registered User: Create and save one or more scenarios, which can be accessed for editing and analysis.

[Remind me of my
User Name/Password](#)

[AFDC Home](#) | [EERE Home](#) | [U.S. Department of Energy](#)
[Webmaster](#) | [Web Site Policies](#) | [Security & Privacy](#) | [AFDC Disclaimer](#) | [USA.gov](#)

Content Last Updated: 08/30/2007

PREP – you're a registered user



U.S. Department of Energy
Energy Efficiency and Renewable Energy

Bringing you a prosperous future where energy is
clean, abundant, reliable, and affordable



EERE Home

Alternative Fuels & Advanced Vehicles Data Center

[About the AFDC](#) [Fuels](#) [Vehicles](#) [Fleets](#) [Incentives & Laws](#) [Data, Analysis & Trends](#) [Information Resources](#) [Home](#)

[Help](#)

[Log In](#)

Petroleum Reduction Planning Tool

Welcome: Guest User

As a guest user, you can set a goal and create a petroleum reduction scenario to meet it. To begin, determine your goal by filling in the fields below. If you don't want to set a petroleum reduction goal, proceed to Step 2 by selecting the button at the right.

[Proceed to Step 2
Without Setting a Goal](#)

Step 1: Set a Petroleum Reduction Goal

To begin, enter your annual petroleum usage in gasoline gallon equivalents. Next enter the percentage of petroleum use you want to reduce. As a default, the tool suggests a reduction goal of 20%. If this percentage does not meet your goal, adjust it as necessary.

Insert your total annual petroleum usage: gasoline gallon equivalents (GGEs)

Enter the percentage of petroleum use you would like to reduce: %

Based on your input, your petroleum reduction goal is: gasoline gallon equivalents (GGEs)

[Set This Goal and
Proceed to Step 2](#)

Two inputs – usage and reduction goal

Set goal then consider strategies

PREP – you're a registered user

Alternative Fuels & Advanced Vehicles:Petroleum Reduction Planning Tool - Mozilla Firefox

File Edit View History Bookmarks Tools Help

http://eeredev.nrel.gov/afdc/prep/step_two.php

Mozilla Firefox Start Page Alternative Fuels & Advanced Ve...

U.S. Department of Energy
Energy Efficiency and Renewable Energy
Bringing you a prosperous future where energy is clean, abundant, reliable, and affordable

AFDC

EERE Home

Alternative Fuels & Advanced Vehicles Data Center

About the AFDC Fuels Vehicles Fleets Incentives & Laws Data, Analysis & Trends Information Resources Home

Help Log In

Petroleum Reduction Planning Tool

Step 2: Create Your Petroleum Reduction Scenario

Use the color-coded tabs below to choose a [method](#) you would like to explore. Your petroleum reduction scenario can consist of one method or a combination of them. After saving your inputs, switch methods by choosing another tab. To generate a printable version of your scenario, select the Generate Plan button below.

Alternative Fuels HEVs Biodiesel Blends Fuel Economy **VMT Reduction** Truck Stop Electrification Idling Time Reduction Onboard IR Help

Register to Save this Scenario

Generate Plan

Results

Welcome Guest
Scenario Name: Guest Scenario

Annual Petroleum Reduction Goal:
0 GGE

Goal = 0

Alt Fuels
HEV
Biodiesel Blends
Fuel Economy
VMT
TSE
IR

Done

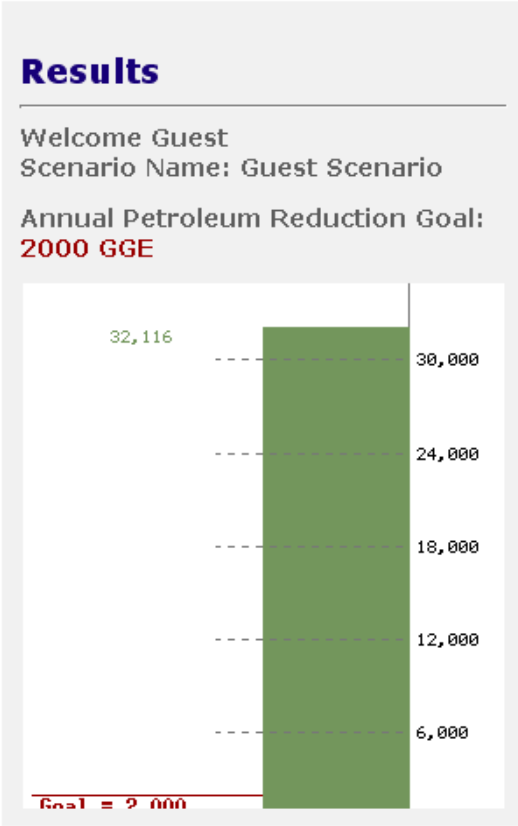
[Help](#) [Log In](#)

Petroleum Reduction Planning Tool

Step 2: Create Your Petroleum Reduction Scenario

To calculate the petroleum reduction potential of [Alternative Fuels](#), fill in the boxes below using your [actual historical fleet data](#). Default values based on nationwide statistics are provided; however, since your own fleet operations can vary considerably from these averages, we strongly recommend you use fleet-specific data.

Alternative Fuels	HEVs	Biodiesel Blends	Fuel Economy	VMT Reduction	Truck Stop Electrification	Idling Time Reduction	Onboard IR
Alternative Fuels							Help
AFV Type*	AFV Fuel*	Number of AFVs*	Average VMT	Fuel Economy (mpg)	Fraction of Fuel Use*		
Pick from list	Pick from list						Save Inputs
AFV Type*	AFV Fuel*	Number of AFVs*	Average VMT	Fuel Economy (mpg)	Fraction of Fuel Use*		
Midsize Car Diesel	LPG	40	25000	25	.7		Save Edits
Delete: <input type="checkbox"/>				GGE Reduced: 32,116			



* Required

[Register to Save this Scenario](#)

[Generate Plan](#)

Alternative Fuels & Advanced Vehicles Data Center

About the AFDC Fuels Vehicles Fleets Incentives & Laws Data, Analysis & Trends Information Resources Home

Help

Log In

Petroleum Reduction Planning Tool

Step 2: Create Your Petroleum Reduction Scenario

To calculate the petroleum reduction potential of [Hybrid Electric Vehicles](#), fill in the boxes below using your [actual historical fleet data](#). Default values based on nationwide statistics are provided; however, since your own fleet operations can vary considerably from these averages, we strongly recommend you use fleet-specific data.

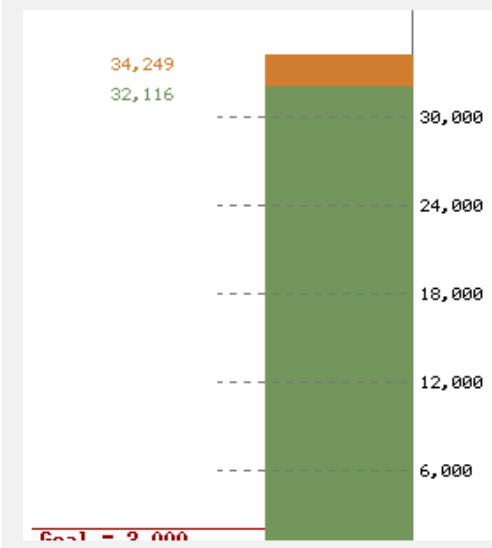
Alternative Fuels	HEVs	Biodiesel Blends	Fuel Economy	VMT Reduction	Truck Stop Electrification	Idling Time Reduction	Onboard IR
Hybrid Electric Vehicles (HEVs)							Help ▶
Fuel Type*	Number of Vehicles*	Average VMT*	Fuel Economy of New HEVs*	Fuel Economy of Old Vehicles*			
Pick from list ▼	<input type="text"/>	<input type="text"/>	<input type="text"/>	<input type="text"/>	Save Inputs		
Fuel Type*	Number of Vehicles*	Average VMT*	Fuel Economy of New HEVs*	Fuel Economy of Old Vehicles*			
Gasoline ▼	15	8000	45	25	GGE Reduced: 2,133		
Delete: <input type="checkbox"/>						Save Edits	

Register to Save this Scenario ▶

Results

Welcome Guest
Scenario Name: Guest Scenario

Annual Petroleum Reduction Goal:
2000 GGE



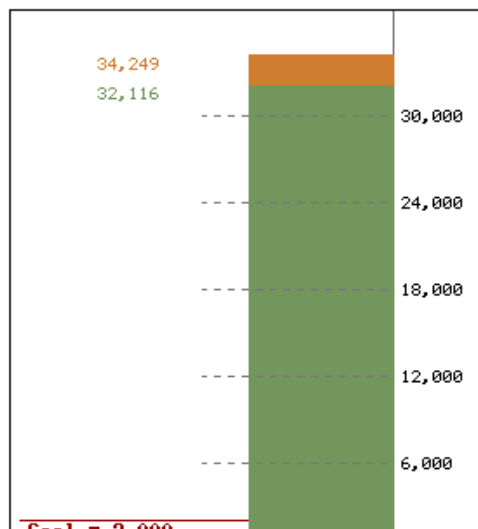
* Required

Petroleum Reduction Plan

Annual Petroleum Reduction Requirement: **2000 GGE**
1,712% realized

Based on your inputs, this is your petroleum reduction requirement. If you are satisfied with this plan, print it, obtain the signature of a senior official, and [mail it to DOE](#) as part of your Alternative Compliance waiver application package.

To alter your plan, return to [Step 2](#).



Alternative Fuels

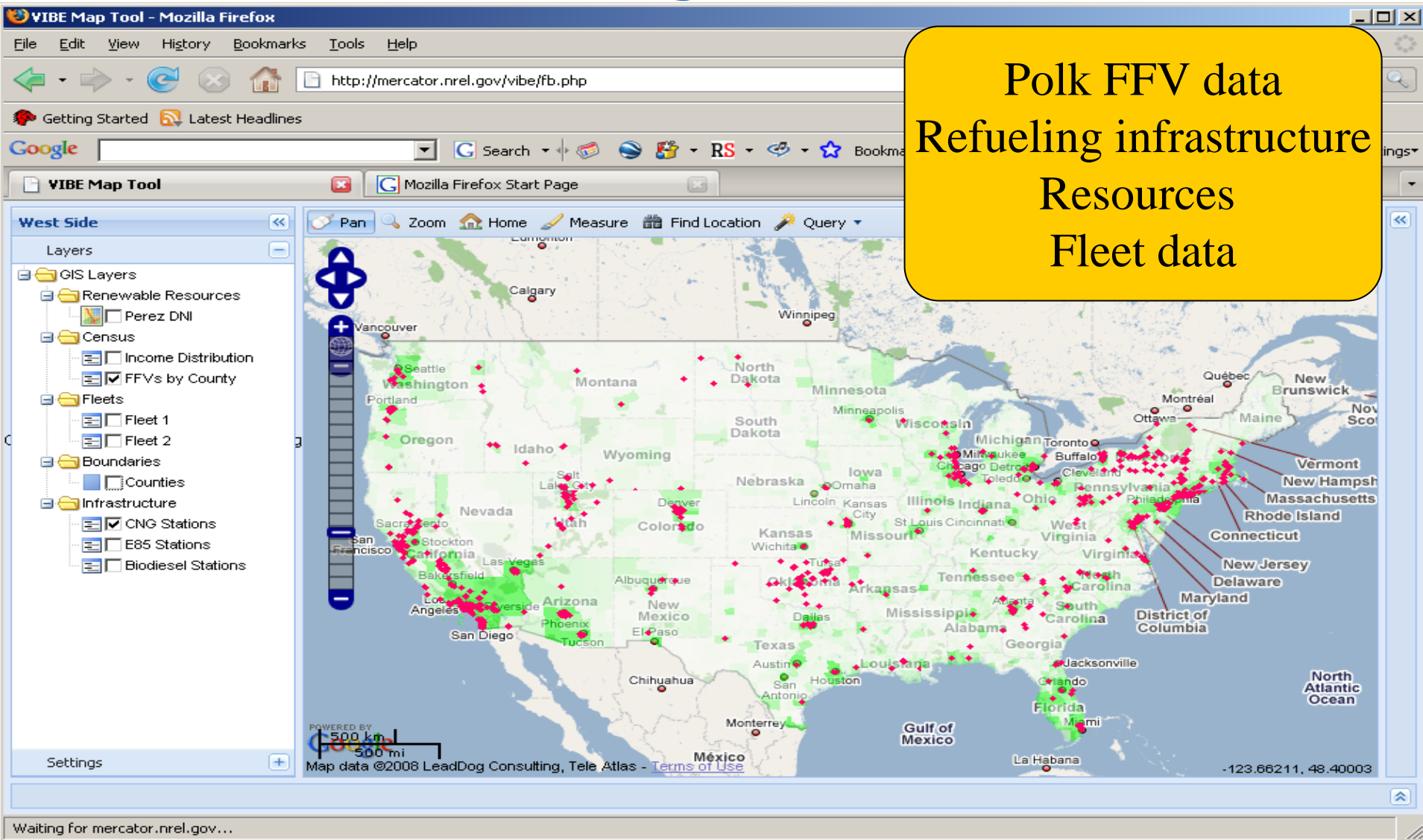
AFV Type	AFV Fuel	Number of AFVs	Average VMT	Fuel Economy (mpg)	Fraction of Fuel Use	GGE Reduced
Midsize Car Diesel	LPG	40	25000	25	.7	32116
TOTAL GGE						32116

Hybrid Electric Vehicles (HEVs)

Fuel	Number of	Average	Fuel Economy of	Fuel Economy of	GGE
------	-----------	---------	-----------------	-----------------	-----

Done

“Dynamic” Geographic Display Coming Soon....



Polk FFV data
Refueling infrastructure
Resources
Fleet data

Station Locator for Mobile Devices Coming Soon....

http://eeredev.nrel.gov/afdc/...

File Edit View Favorites Too >>

Back Forward Stop Refresh Home >>

Address http://eerec Go Links >>

Alternative Fuels & Advanced Vehicles Data Center

Fuel Type
Compressed Natural Gas

Location
Denver, CO

Search

Trusted sites

http://eeredev.nrel.gov/afdc/locator/m/station/r?f...

File Edit View Favorites Tools Help

Back Forward Stop Refresh Home Search >>

Address http://eeredev.nrel.gov/afdc/locator/r Go Links >>

Map showing Denver, CO area with various highways (76, 85, 70, 270, 36, 6, 87, 40, 287, 28) and landmarks (Federal Blvd, W 6th Ave Fwy, E Colfax Ave).

Zoom: + | -

Clean Energy - Diamond Shamrock
1.6 miles
1001 Broadway Street
Denver, CO 80204
*Public - card key at all times
24 hours daily, Natural Fuels Card required*

Trusted sites

Clean Cities Coordinator “Dashboard” Coming Soon....

Web [Images](#) [Maps](#) [News](#) [Shopping](#) [Gmail](#) [more](#) vibeuser@gmail.com | [Classic Home](#) | [My Account](#) | [Sign out](#)

iGoogle™ [Advanced Search](#) [Search Preferences](#) [Language Tools](#)

Google Search I'm Feeling Lucky

Home Denver News [Add a tab](#) [Get artist themes](#) | [Select theme](#) | [Add stuff](#)

Hybrid Vehicle Sales

HEV Sales by Year

Year	Thousands of Vehicles
1999	10
2000	20
2001	30
2002	40
2003	50
2004	70
2005	100
2006	150
2007	380
2008	240

NREL Map of the Day - E85 Stations

AFDC RSS Feed

- [U.S. DOE's Alternative Fuels & Advanced Vehicles Data Center](#)
- [Natural Gas Powers 38 New York Metro Refuse Trucks](#)
- [Graph Reflects Reduction in Vehicle Miles Traveled in U.S.](#)

Date & Time

Fri SEP 5

Top Stories

- [Carolinas Brace for Tropical Storm](#)
New York Times - [all 3007 related](#)
- [New nominee McCain distances himself from GOP](#)
USA Today - [all 584 related](#)
- [Rice in Libya to Meet Qaddafi](#)
New York Times - [all 1179 related](#)

Live Weather

Denver [edit](#)

Products/ Information/Communications

- Information and publication needs
 - Overview fact sheet, conversions
 - Other topics in information products – what can we add and what is the right method?
 - Fact sheet/webcast/reference list
- Webcasts – 3rd Thursday at 1:00 eastern
 - Fed fleet info is forthcoming
 - Topics – interns,
 - What other coordinator expertise can we capitalize on?
- Event requests/speaker planning

Data and Analysis Web site

About the AFDC **Fuels** **Vehicles** **Fleets** **Incentives & Laws** **Data, Analysis & Trends** **Information Resources** **Home**

Data, Analysis & Trends

0.004
0.002
0.000

Search Help ▶ More Search Options ▶

Site Map
EERE Information Center

■ **FEATURES**

Ethanol
Propane
Natural Gas

Total Station Counts (by state & fuel type)

Alternative Fuel Price Report

Clean Cities

[Printable Version](#)

Data stored in the Alternative Fuels and Advanced Vehicles Data Center (AFDC) can provide insight to policymakers, entrepreneurs, fuel users, and other parties interested in reducing petroleum consumption. The National Renewable Energy Laboratory analyzes transportation-related data and identifies trends related to alternative fuels and vehicles. These analyses are posted in the AFDC as technical reports and Excel spreadsheets that can be manipulated by outside users. To provide the most robust collection of information possible, this section also includes links to data analyses from outside the AFDC. These sources are noted in each file.

This page serves as a table of contents for the Data, Analysis, and Trends section. For more information, choose the following links.

- [Vehicles ▶](#)
- [Fuels ▶](#)
- [Infrastructure ▶](#)
- [Biomass Resources ▶](#)
- [Geographic ▶](#)
- [Incentives and Laws ▶](#)
- [Clean Cities ▶](#)
- [State and Alternative Fuel Provider Fleets ▶](#)
- [Federal Fleets ▶](#)
- [Data Collection Methodologies ▶](#)

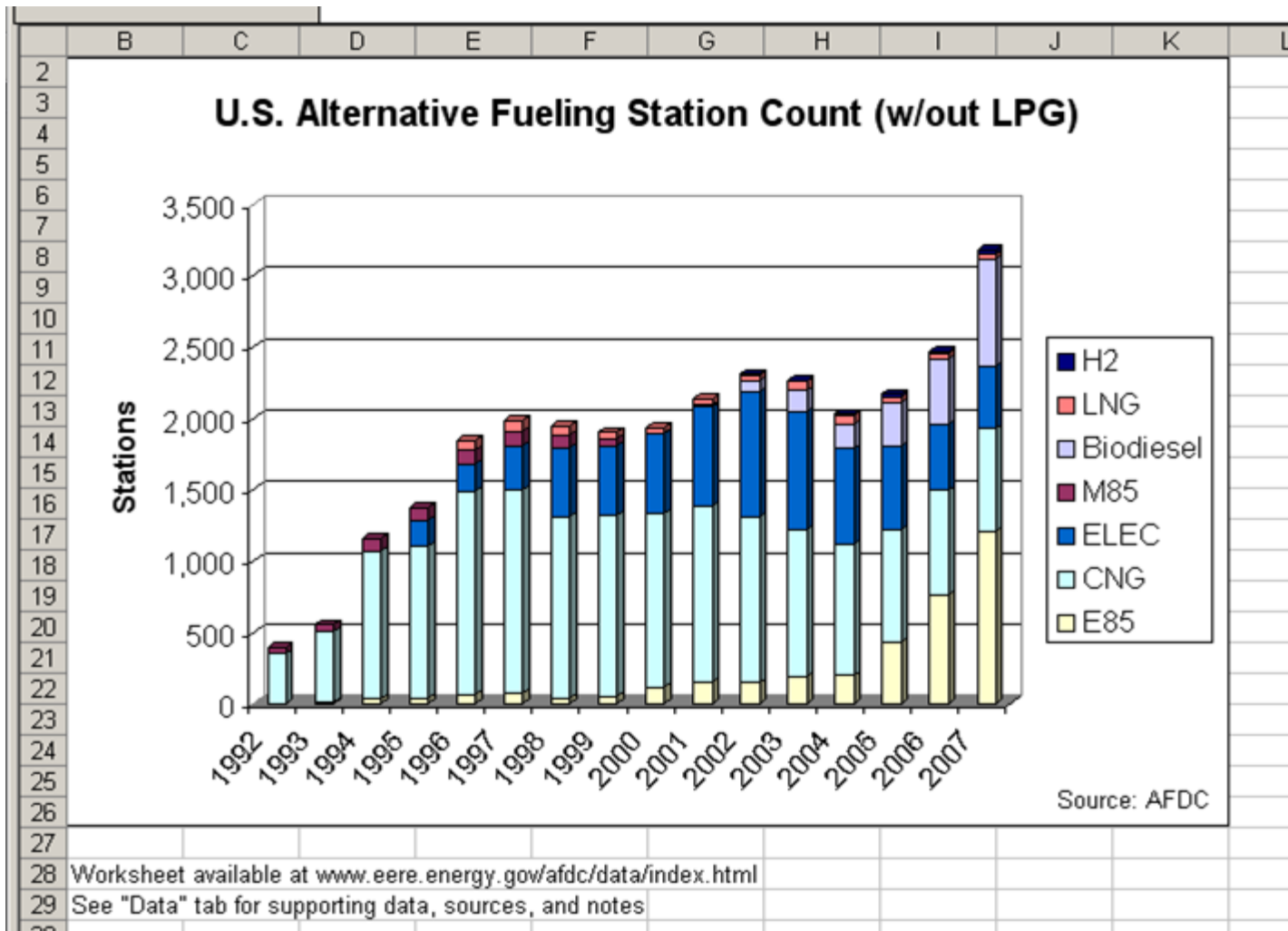
For more information about the data, analysis, and trends presented on these pages, please contact [Caley Johnson](#) at the National Renewable Energy Laboratory.

[Printable Version](#)

Each section has
Numerous tables

Data is in tabular form
behind charts/graphs

Data and Analysis Web site



47
48
49

Graph Data